



INSTALLATION AT



ROYAL BOTANICAL GARDENS

CSC LED's 15W FL01 Daymaker Flood/Area lights were recently installed in a stained glass art installation at the Royal Botanical Gardens in Hamilton, Ontario. This unique project required the fixtures to be small enough so that they were not prominent when being viewed during the daylight, but also durable enough to withstand all the elements.

By choosing CSC LED's FL01 Daymaker, they were able to achieve the low-profile look that the customer was looking for, all the while illuminating the stained glass sculpture exactly how they desired.

With our 10-year warranty, our customers can rest easy knowing that our team of dedicated professionals are there to help with any technical or safety questions related to their lighting purchase, no matter how unique the project might be.



WHAT WAS USED

FL01 DAYMAKER FLOOD / AREA LIGHT

15W | 5000K | 120-277V

- High grade polycarbonate optics that will never yellow
- Includes Lumiled chips, 1m whip, and a versatile yoke mount

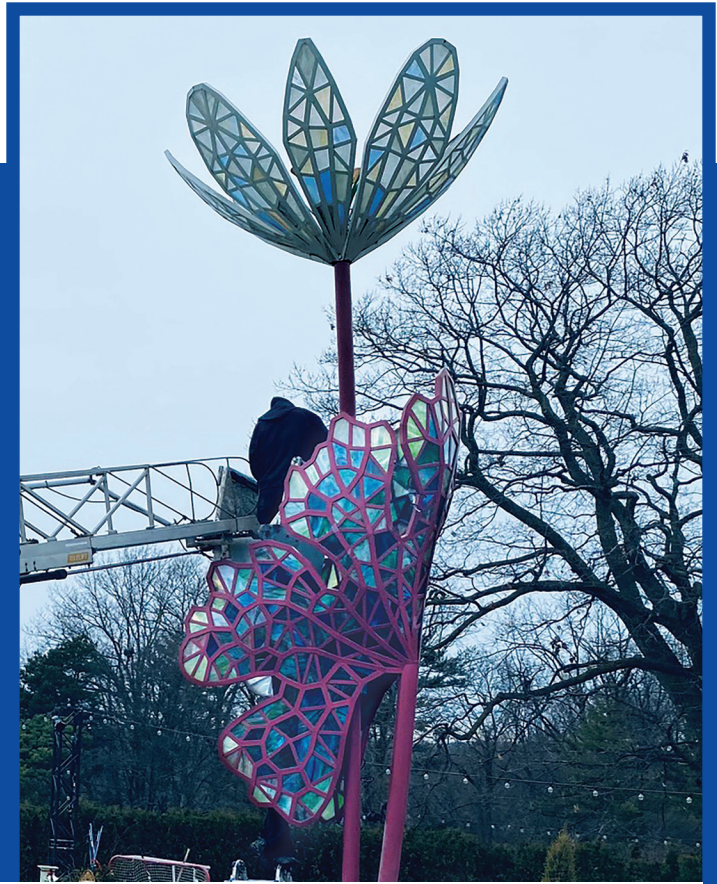


NEW GENERATION

FLM MINI FLOOD / AREA LIGHT

15W-90W | Available in a variety of colour temperatures
with voltage and mounting options to choose from

- Includes a built-in photocell, 0.5m power cord, and die-cast aluminum housing with cooling fins for superior heat dissipation
- 30W-90W models are colour tunable (3000K, 4000K, 5000K)
- Ideal for landscaping, patio, and security lighting; signs; and building facades



www.csc-led.com | info@csc-led.com

Ontario Head Office
8 - 540 Jamieson Parkway
Cambridge, ON Canada N3C 0G5
orders@csc-led.com

British Columbia Office
121-1647 Broadway Street
Port Coquitlam, BC Canada V3C 6P8
ordersbc@csc-led.com