



 CSCLED

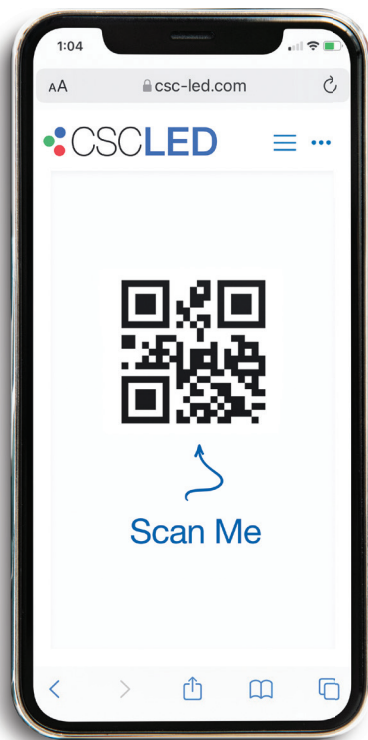
2022



1 - 888 - 900 - 9885 | info@csc-led.com

www.csc-led.com

In a world where technology is constantly advancing, we understand the importance of utilizing it. Implementing QR codes in our catalogues ensures that you always have the most up-to-date information at your fingertips and helps reduce our eco-footprint!



HOW TO Utilize the QR Codes

1. Open the camera on your smartphone. **Note:** If you have an older device, you may have to download a QR Code Reader app.
2. Hold your device over a QR Code so that it's clearly visible within your smartphone's screen. Two things can happen when you correctly hold your smartphone over a QR Code.
 - a) The phone automatically scans the code.
 - b) On some devices, you may have to press a button to snap a picture.
3. That's it! Once your device reads the code, it will navigate to the intended web page for more information about CSC LED products and services.

Not Working?

Visit www.csc-led.com and search by the series name



Our Vision is to be the best and most reliable business partner your company has

Our mission is to support our business partners in the industrial and commercial construction sector with persistent communication and collaboration.

CSC LED, formerly known as Earth-line SSL, has been in the LED business since 2006. We partner with our electrical wholesale customers and provide affordable and reliable LED products that are made with only the best LED chips, drivers, and thermal management.

What makes us different from our competitors?

- We understand the business from the perspective of all parties involved - distributors, sales representatives, electricians, contractors, etc.
We have a diverse team of professionals on staff who understand and have experience in the industry and are therefore able to provide our customers with the best products, service, and support.

- We partner with our customers to ensure a mutually beneficial relationship.
We provide back-end tools and support to make our wholesale customer's jobs easier, including online access to pricing and inventory levels 24/7.
- We have been in the industry for over 14 years.
We have outlasted our warranties - not many of our competitors can boast this!

What's different about our products?

- Tier 1 quality products at competitive price points.
- Our products use the same LED light engines, the same quality drivers, and the same castings and powder coat finishes as many of the higher priced products in the marketplace.

High quality products, competitive prices, and great customer service!

Flood / Area Lights

FL04B Series

BEST SELLER



FL04 Series

CLEARANCE



FL02 Series

CLEARANCE



Concorde Series

A versatile, clean, appearance. Pre-wired for optional motion sensor (sold separately)



Concorde Series

A sleek, streamlined design with unsurpassed performance



Streamline Series

Ideal for landscape lighting, architectural flood lighting, and interior wall washing



| | |
|---------|--|
| Watts | 60W, 80W, 100W, 150W, 200W, 240W, 300W, 450W |
| Voltage | 120-347V |
| CCT | 30K*, 40K, or 50K |
| DLC | Premium |

| | |
|---------|---------------------|
| Watts | 240W, 300W, 450W |
| Voltage | 120-277V*, 277-480V |
| CCT | 40K or 50K |

| | |
|---------|----------|
| Watts | 20W |
| Voltage | 120-277V |
| CCT | 40K |

"This light, again and again, impresses customers and leaves a great impact. It is important to get lights that work and stay working once installed, the FL04B series fits the bill."

- April 2021 Review

ST02B Series

LIMITED STOCK



SP01B Series



SP01 Series

CLEARANCE



Street Lights

The same features as the customer favourite ST02 Series, now DLC 5.1



Sports Stadium Lights

Now available in more wattages and 120-347V! Complete with yoke mount



Sports Stadium Lights

Suitable for recreational facilities, high mast applications, and more



| | |
|---------|-----------|
| Watts | 50W, 100W |
| Voltage | 120-277V |
| CCT | 40K |
| DLC | Premium |

| | |
|---------|-------------------|
| Watts | 500W, 750W, 1000W |
| Voltage | 120-347V |
| CCT | 50K |
| DLC | Premium |

| | |
|---------|------------|
| Watts | 600W, 750W |
| Voltage | 277-480V |
| CCT | 50K |

Flood / Area Lights

FLM Series



Mini Flood Lights

Ideal for landscaping, patio, security lighting, signage, and more



| | |
|---------|-------------------------------|
| Watts | 15W, 30W, 50W, 70W, 90W |
| Voltage | 120-277V* or 120-347V |
| CCT | 40K* or Tunable (30K/40K/50K) |
| DLC | 30W-90W: Premium |

PTA02 Series



“These pole tops are great with the colour temperature adjustability. The price point beats out the competition hands down.”

- March 2021 Review

Pole Top Area Lights

Elegant look and design. Ideal for parking lots, pathways, parks, and more. Suitable for use with up to 3" OD poles and complete with a high efficiency Type 5 optic lens



| | |
|---------|---------------------------|
| Watts | 35W, 55W, 75W, 100W, 150W |
| Voltage | 120-277V*, 120-347V |
| CCT | Tunable (30K/40K/50K) |
| DLC | Premium |

Downlights

CDL02 Series



Achieve your custom look by choosing from our **5** reflector options

Commercial Downlight

Energy Star rated with 0-10V dimming and a built-in junction box. All models feature 120-347V universal driver with 4kV surge protection. Reflectors sold separately



| | |
|---------|---|
| Watts | 15W, 20W, Selectable (27W/34W/40W) |
| Voltage | 120-347V |
| CCT | Tunable (30K/40K/50K) or (30K/35K/40K)* |

Accessories (Sold Separately):

4" Round Reflector, 4" Square Reflector, 4" Round Wall Wash Reflector, 6" Round Reflector, 8" Round Reflector



CDL Series

CLEARANCE



Commercial Downlight

Energy Star rated with 0-10V dimming. Reflectors sold separately



| | |
|---------|----------|
| Watts | 18W |
| Voltage | 120-277V |
| CCT | 35K |

Accessories (Sold Separately):

6" Reflector, 8" Reflector, 6" Housing Frame, 8" Housing Frame

CLEARANCE: While supplies last
Comes with 1-year manufacturer warranty

Hazloc / Explosion-Proof

EXPL Series



Linear Explosion-Proof

C1, D2, (Groups A, B, C, D),
UL844, UL1598, UL8750.
Yoke mount sold separately



| | |
|---------|----------|
| Watts | 40W, 80W |
| Voltage | 120-277V |
| CCT | 50K |
| Length | 2', 4' |

EXPR Series



Round Explosion-Proof

C1, D2, (Groups A, B, C, D),
UL844, UL1598, UL8750.
Atex II2G Ex db IIC T6 Gb



| | |
|---------|-----------------|
| Watts | 60W, 100W, 150W |
| Voltage | 120-277V |
| CCT | 50K |
| Beam | 110° |

CES Series

CLEARANCE



Hazloc / Explosion-Proof

cUL 8750 rated for Class 1,
Div 2 groups A, B, C, D.
Instant on with no warm-up time



| | |
|---------|------------|
| Watts | 100W, 185W |
| Voltage | 120-277V |
| CCT | 50K |

Lamps

CLW Series

CLEARANCE



Corn Lamps

Ideal for use in high bays,
area lights, flood lights,
wall packs and more



| | |
|---------|-------------------------|
| Watts | 15W, 30W, 36W, 54W, 75W |
| Voltage | 120-277V |
| CCT | 50K |
| Base | E26*, E39* |

CLW08 Series

CLEARANCE



Corn Lamps

Direct replacement for Metal
Halide or HPS. 360° Beam
angle and rated IP64



| | |
|---------|----------|
| Watts | 100W |
| Voltage | 120-277V |
| CCT | 50K |
| Base | E39 |

CLH Series

CLEARANCE



Paddle Lamps

LED replacement lamps for
directional Metal Halide and
HPS. Rated IP51



| | |
|---------|--------------------|
| Watts | 27W, 36W, 54W, 75W |
| Voltage | 120-277V |
| CCT | 50K |
| Base | E26*, E39* |

High Bays

HB7C Series

NEW!



HB7C Series High Bay

Ideal for warehouses, factories, and more. Newly designed, shatterproof polycarbonate optics meet DLC 5.1 glare standards



| | |
|---------|-------------------------------|
| Watts | 100W, 150W, 200W, 240W, 300W* |
| Voltage | 120-277V, 120-347V, 277-480V* |
| CCT | 40K or 50K |
| Beam | 90° |
| DLC | Premium |

“Installed several of these for our customers. Customers are extremely pleased with the performance.”

- March 2022 Review

LHB03 Series

NEW!



Linear High Bay

All of the amazing features of the LHB2, now with newly designed, shatterproof polycarbonate optics that meet DLC 5.1 glare standards



| | |
|---------|------------------------|
| Watts | 110W, 165W, 220W, 300W |
| Voltage | 120-347V |
| CCT | 40K or 50K |
| Beam | 100° |
| DLC | Premium |

HB7B Series

LIMITED STOCK



CSC LED 2021 BEST SELLING SERIES

High-grade aluminum body for superior heat dissipation and a black polyester powder coat finish. Utilize the ease of the twist-on motion sensor (sold separately)



| | |
|---------|-------------------------------|
| Watts | 100W, 150W, 200W, 240W, 300W |
| Voltage | 120-277V, 120-347V, 277-480V* |
| CCT | 40K or 50K |
| Beam | 120° |

“The UFO fixtures ranging from 120-347V make the projects so much easier. My contractor loves them!”

- March 2021 Review

LHB2 Series

CLEARANCE



Linear High Bay

Centre knockout allows for the easy installation of an optional motion sensor (sold separately). Complete with two mounting hooks and two 40" chains



| | |
|---------|------------------------|
| Watts | 110W, 165W, 220W, 300W |
| Voltage | 120-347V |
| CCT | 40K or 50K |
| Beam | 100° |

CLEARANCE: While supplies last
Comes with 1-year manufacturer warranty

Panels / Troffers

PLP Series

NEW!



Panel Lights

These DLC Premium panel lights are colour tunable, and wattage selectable



| | |
|---------|---|
| Watts | Selectable (20W/30W/40W) or (30W/40W/50W) |
| Voltage | 120-347V |
| CCT | Tunable (30K/35K/40K) |
| Size | 1'x4', 2'x2', 2'x4' |
| DLC | Premium |

PLS Series

NEW!



Panel Lights

High performance, light-weight luminaires suitable for lay-in, surface, or pendant mounting



| | |
|---------|---|
| Watts | Selectable (20W/30W/40W) or (30W/40W/50W) |
| Voltage | 120-277V |
| CCT | 40K |
| Size | 1'x4', 2'x2', 2'x4' |
| DLC | Standard |

PLBL Series

CLEARANCE



Backlit Panels

Back Mounted LED Chips with superior lensing ensures even overlap and illumination



| | |
|---------|---------------|
| Watts | 40W |
| Voltage | 120-347V |
| CCT | 35K, 50K* |
| Size | 1'x4', 2'x2'* |

"Competitively priced panel fixture with exceptional quality."

- March 2021 Review

PLB Series

LIMITED STOCK



"Love this backlit panel. Colour selectable and multi voltage now means we only have to stock 3 fixtures to cover off all our customer requirements freeing up shelf space to stock more CSC LED products!"

- April 2021 Review

Backlit Panels

High performance and light-weight luminaire suitable for lay-in, surface, or pendant mounting. Less than 2.2" deep makes it ideal for tight plenum areas and the waffle stamped backing increases heat dissipation and driver life



| | |
|---------|--------------------------|
| Watts | Selectable (25W/30W/40W) |
| Voltage | 120-347V |
| CCT | Tunable (35K/40K/50K) |
| Size | 1'x4', 2'x2' |
| DLC | Standard |

UDPL Series

CLEARANCE



Direct/Indirect Panel Lights

50% up and 50% down light distribution. Complete with fully adjustable aircraft cables (1m)



| | |
|---------|----------|
| Watts | 40W |
| Voltage | 120-277V |
| CCT | 35K, 40K |
| Size | 1'x4' |

Panels / Troffers

VOL Series

NEW MODELS!



Wattage selectable models meet/exceed DLC 5.1 glare standards for increased visual comfort

Volumetric Troffers

Ideal for commercial lighting areas such as offices, retail spaces, hallways, healthcare applications, and more. Rigid steel frame mounts to any T-Bar ceiling



| | |
|---------|---|
| Watts | 30W, 40W, Selectable (20W/30W/40W) or (30W/35W/40W) |
| Voltage | 120-347V |
| CCT | 35K, 40K, Tunable* (30K/35K/40K) |
| Size | 1'x4', 2'x2', 2'x4' |
| DLC | Standard: VOL22-40W-3P-3CCT-UD, Premium: VOL24-40W-3P-3CCT-UD |

Canopy Lights

GCL01 Series

NEW!



Garage Canopy Lights

Horizontal light dispersion for maximum uniform coverage and optimal visual comfort. Cost-effective and efficient lighting for parking garages, covered walkways, and canopies



| | |
|---------|----------|
| Watts | 45W, 75W |
| Voltage | 120-347V |
| CCT | 40K |
| Beam | 170° |
| DLC | Premium |

See what our customers are saying about us!

“Very prompt to respond to customer inquiries. CSC LED staff and agents are very friendly, helpful & knowledgeable.”

- February 2021 Review

“This site is one of the best portals I use for placing orders online.”

- June 2022 Review

“CSC LED has a great product mix and excellent customer service. A wonderful company to do business with!”

- March 2021 Review

“I suggest CSC LED for all jobs that you have the chance to offer it for!”

- March 2021 Review

“Great product and always lots of stock! Backed by excellent pricing!”

- April 2022 Review

“Accurate stock levels, pricing, ETA's, everything is perfect. Should be a standard in our industry!”

- April 2022 Review

CLEARANCE: While supplies last
Comes with 1-year manufacturer warranty

www.csc-led.com | info@csc-led.com

Horticultural

GL01 Series

NEW!



Full Spectrum Grow Light

Features high output Lumiled diodes and full spectrum output with optimized uniformity. The 120-347V driver is complete with 4kV surge protection and superior thermal management

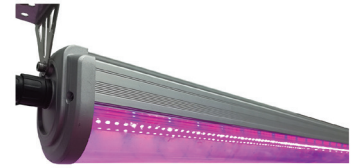


| | |
|---------|---------------------------------|
| Watts | 480W, 660W |
| Voltage | 120-347V |
| PAR | 1,163 - 1,651 $\mu\text{mol/s}$ |
| DLC | Horticultural |



LGL Series

LIMITED STOCK



Linear Grow Light

Can be positioned close to plants without the risk of burn and ideal for vertical farming



| | |
|---------|---------|
| Watts | 53W |
| Voltage | 85-265V |
| Beam | 120° |
| Length | 4' |

T-Grid

T-Grid Series



T-Grid Integrated Luminaires

Seamless integration into suspended ceilings allows you to create unique lighting designs



| | |
|---------|----------|
| Watts | 10W, 20W |
| Voltage | 120-277V |
| CCT | 35K, 40K |
| Length | 2', 4' |

Vapour Proofs

SL Series

CLEARANCE



2' Tri-Proofs

Rated IP66 and suitable for surface or suspended mounting



| | |
|---------|----------|
| Watts | 30W, 40W |
| Voltage | 120-277V |
| CCT | 50K |

VT Series



NEMA 4X Vapour Tights

IP66, NEMA 4X, and IK10 rated. Suitable for areas that require a high impact-resistant fixture



| | |
|---------|----------------------------------|
| Watts | 36W, 46W, 65W, 100W, 150W |
| Voltage | 120-347V |
| CCT | 40K, 50K, Tunable (35K/40K/50K)* |

Strip Lights

AL Series

NEW!



Architectural Linear Strips

Elevate your space by creating your own custom lighting design



| | |
|---------|-----------------------|
| Watts | 40W, 80W |
| Voltage | 120-347V |
| CCT | Tunable (30K/35K/40K) |
| Length | 4', 8' |

WR1 Series



WR1 Wrap Fixture

Ideal for commercial and industrial applications. Surface or pendant mount ready



| | |
|---------|----------|
| Watts | 35W |
| Voltage | 120-277V |
| CCT | 40K |
| DLC | Standard |

WR2 Series

NEW!



WR2 Wrap Fixture

CSC LED's most versatile wrap fixture that meets or exceeds all commercial specifications



| | |
|---------|------------------------------|
| Watts | Selectable (24W/27W/30W/35W) |
| Voltage | 120-347V |
| CCT | Tunable (35K/40K/50K) |
| DLC | Premium |

Security / Work Lights

ST4 Series



CCT Tunable Strip Light

Designed for a quick and easy installation with an external CCT selector switch



| | |
|---------|-----------------------|
| Watts | 32W |
| Voltage | 120-347V |
| CCT | Tunable (35K/40K/50K) |

TWL Series

LIMITED STOCK



Temporary Work Lights

Ideal for subway construction, factory/residential renovations, docks, and more



| | |
|---------|-------------|
| Watts | 20W**, 100W |
| Voltage | 120V |
| CCT | 50K |
| Beam | 266° |

SS Series



Black Finish Available

Security Light

Swivel arms allow for directional light. Includes 180° motion detection and 3 operating modes



| | |
|---------|----------|
| Watts | 20W |
| Voltage | 120-277V |
| CCT | 50K |

**Available on a 10ft string

Wall Packs

CWP04 Series



“Looks great, easy to install, multiple colour temperatures, and the 120-347V makes it perfect for any job.”

- March 2021 Review

DWS Series



Decorative Wall Sconces

Choose from 3 covers to create your custom look. Suitable for indoor or outdoor applications



CWP04 Wall Packs

Ideal for entryway and exterior security lighting. Easy installation and maintenance with colour temperature and voltage options. Complete with a borosilicate glass lens and built-in photocell (can be bypassed)

| | |
|---------|-----------------------|
| Watts | 40W, 60W, 80W, 120W |
| Voltage | 120-347V |
| CCT | Tunable (30K/40K/50K) |
| DLC | Premium |

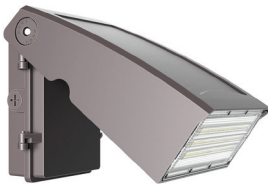
| | |
|---------|---------------|
| Watts | 15W |
| Voltage | 120-277V |
| CCT | 30K, 40K |
| Finish | Bronze, Black |

“From a stocking distributor point of view, this product is spectacular, fewer SKUs leaves more shelf space for other CSC LED products.”

- March 2021



AWP03 Series



CWP03 Series

CLEARANCE



“This wallpack is a great value and also has the benefit of being the same form factor as most old HID units, so no painting or brick re-work is necessary.”

- July 2021 Review

Architectural Wall Packs

Versatile wall pack with a slim profile that fits almost any outdoor lighting application



| | |
|---------|--|
| Watts | 20W, 40W, 80W, 120W, Selectable (10W/20W/30W/40W)* |
| Voltage | 120-277V, 120-347V |
| CCT | 40K |
| DLC | Premium |

CWP03 Wall Packs

Ideal for exterior and entryway lighting. Durable die-cast aluminum body with polycarbonate (shatterproof) lens and a bronze finish.



| | |
|---------|---------------------|
| Watts | 40W, 60W, 80W, 120W |
| Voltage | 120-277V, 277-480V |
| CCT | 40K, 50K |

Wall Packs

RWP02 Series

NEW!



Rotatable Wall Packs

Use as an uplight, downlight, or flood light with the two 270° rotatable modules. 0-10V dimmable with 4kV surge protection and an oversized heat sink for superior thermal management



| | |
|---------|-----------------------|
| Watts | 40W, 60W, 80W |
| Voltage | 120-277V |
| CCT | Tunable (30K/40K/50K) |
| DLC | Premium |

“I used this on a building in close proximity to other properties. I needed a flexible luminaire to light up the required area on my building without polluting private property.”

- March 2021 Review

RWP Series

CLEARANCE



Rotatable Wall Packs

270° rotatable module for flexible light control



| | |
|---------|----------|
| Watts | 25W, 40W |
| Voltage | 120-277V |
| CCT | 50K |

“This can be utilized in multiple applications in place of two fixtures and where wall space is limited.”

- March 2021 Review

MWP03

NEW!



MWP03 Mini Wall Packs

Ideal for security lighting, commercial entrances, stairways, perimeter areas, and more



| | |
|---------|----------|
| Watts | 20W |
| Voltage | 120-277V |
| CCT | 40K |
| DLC | Premium |

MWP2 Series

LIMITED STOCK



Mini Wall Packs

1/2" NPT plugs for conduit or controls and low glare with frosted polycarbonate lens



| | |
|---------|----------|
| Watts | 15W |
| Voltage | 120-277V |
| CCT | 30K |

WPX Series

BEST SELLER



WPX Wall Packs

Approved by International Dark Sky Association (when set to 3000K operation)



| | |
|---------|-----------------------|
| Watts | 30W, 50W, 80W, 120W |
| Voltage | 120-347V |
| CCT | Tunable (30K/40K/50K) |
| DLC | Premium |

DISTRIBUTORS

Contact your regional sales agency to learn more about our products and services

ELECTRICIANS

Contact your regional sales agency to find your nearest electrical wholesaler

Sales Agencies Representing CSC LED Across Canada

BC Sales Agency

ken watt
& associates inc

www.kenwattassoc.com
(604) 576 - 2838
info@kenwattassoc.com

AB/SK Sales Agency



www.sensibleadaptive.com
(403) 869 - 8252
krista.sherven@sensibleadaptive.com

MB Sales Agency



www.tmcsales.ca
(204) 837 - 5036
orders@tmcsales.ca

ON Sales Agency



www.roneymk.com
(905) 595 - 1344
sales@roneymk.com

QC Sales Agency



www.eclairagehitech.com
(450) 442 - 7604
info@eclairagehitech.com

NL Sales Agency

RWM Enterprises Ltd.

Bob Myers, P.Tech, LC
(709) 682 - 4012
bmyersptech@bellaliant.com

Maritimes Sales Agency



www.catalystsales.ca
(902) 266 - 3899
info@catalystsales.ca

Follow Us on Social Media

Instagram
@csclcorp



Facebook
@CSC LED



LinkedIn
@CSC LED







ONTARIO HEAD OFFICE

8 - 540 Jamieson Pkwy
Cambridge, ON N3C 0G5
(519) 880 - 9833

ALBERTA WAREHOUSE

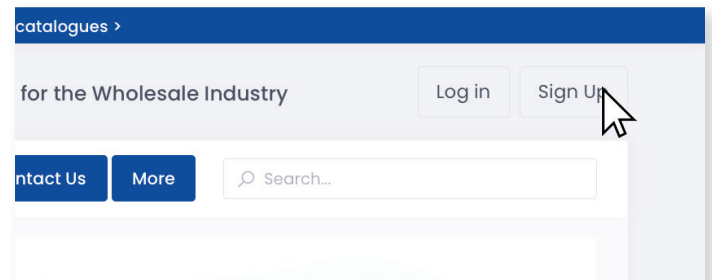
13 - 2355 52 Ave SE
Calgary, AB T2C 4X7
(403) 907 - 0212

BRITISH COLUMBIA OFFICE

121-1647 Broadway St
Port Coquitlam, BC V3C 6P8
(778) 730 - 0448

Register for your Online Distributor Portal Account

1. Distributors and Electrical Wholesalers, visit www.csc-led.com
2. Click on the *Sign Up* button that is located in the top-right corner of the screen
3. Fill in the registration form and submit
4. A member of our team will notify you once you are good to go



Visit www.csc-led.com to learn more about our products, technical specifications, IES files, product availability, certifications, customer testimonials, and more

Making our Customer's Experience Better

“CSC LED staff and agents are very friendly, helpful and knowledgeable.”

- Verified Purchaser (AB)
February 2021

“The website is very easy to use. By far the best website experience.”

- Verified Purchaser (NB)
December 2021

“CSC LED's quality of product ranks with some of the best in the industry!”

- Verified Purchaser (ON)
June 2021

Contractors: Please contact your preferred electrical wholesaler for more information and to place your order

The information provided in our print catalogues and on our website have been gathered and assembled with every effort made to verify the accuracy of the content; however, mistakes can happen. The information in this document is subject to change without notice.

If you have any questions or comments, please reach out to us at marketing@csc-led.com