



 **CSCLED**
HIGH BAYS



Commercial and Industrial LED Lighting
www.csc-led.com



CONTENTS

HB7B Series	pg. 2
LHB2 Series	pg. 6
EXPL Series	pg. 8
EXPR Series	pg. 10

BEST SELLER

THE HB7B SERIES

Round High Bays

Superior heat dissipation and maximum light transmittance

Suitable for warehouses, factories, gas stations, and more

Twist-on motion sensor (sold separately)



Instant Start
0-10V Dimmable

2m Power Cord

Long Life
Elevated Driver
for Cooler
Operation

Polyester Powder
Coat Finish (Black)



High Grade
Aluminum Body
for Superior
Heat Dissipation

Clear Glass Lens

Easy Twist-On
Motion Sensor
sold separately

HB7B SERIES MODELS

PRODUCT CODE	WATTS	CCT	LUMENS	VOLTAGE
HB7B-100W-40K-LV-GL	100W	4000K	15,197 lm	120-277V
HB7B-100W-40K-UD-GL	100W	4000K	15,015 lm	120-347V
HB7B-100W-50K-LV-GL	100W	5000K	15,392 lm	120-277V
HB7B-100W-50K-UD-GL	100W	5000K	15,203 lm	120-347V
HB7B-150W-40K-LV-GL	150W	4000K	21,782 lm	120-277V
HB7B-150W-40K-UD-GL	150W	4000K	22,724 lm	120-347V
HB7B-150W-50K-LV-GL	150W	5000K	22,070 lm	120-277V
HB7B-150W-50K-UD-GL	150W	5000K	22,940 lm	120-347V
HB7B-200W-40K-LV-GL	200W	4000K	29,457 lm	120-277V
HB7B-200W-40K-UD-GL	200W	4000K	30,354 lm	120-347V
HB7B-200W-50K-LV-GL	200W	5000K	29,839 lm	120-277V
HB7B-200W-50K-UD-GL	200W	5000K	30,750 lm	120-347V
HB7B-240W-40K-LV-GL	240W	4000K	34,805 lm	120-277V
HB7B-240W-40K-UD-GL	240W	4000K	36,387 lm	120-347V
HB7B-240W-50K-LV-GL	240W	5000K	35,294 lm	120-277V
HB7B-240W-50K-UD-GL	240W	5000K	36,752 lm	120-347V
HB7B-300W-50K-LV-GL	300W	5000K	45,215 lm	120-277V
HB7B-300W-50K-HV-GL	300W	5000K	43,272 lm	277-480V



HB7B-100W-50K-LV-GL



HB7B-240W-40K-UD-GL



HB7B-300W-50K-LV-GL



HB7B-300W-50K-HV-GL

HB7B SERIES ACCESSORIES (SOLD SEPARATELY)

PRODUCT CODE

HB7B-WG-SM	Wire Guard for 100W/150W HB7B High Bays
HB7B-WG-LG	Wire Guard for 200W/240W HB7B High Bays
HB7B-WG-HG	Wire Guard for 300W HB7B High Bays
HB7B-YK-SM	Yoke Mount for 100W/150W HB7B High Bays
HB7B-YK-LG	Yoke Mount for 200W/240W HB7B High Bays
HB7B-YK-HG	Yoke Mount for 300W HB7B High Bays
HB7B-FR-LENS-SM	Frosted Lens for 100W/150W HB7B High Bays
HB7B-FR-LENS-LG	Frosted Lens for 200W/240W HB7B High Bays
HB7B-FR-LENS-HG	Frosted Lens for 300W HB7B High Bays
HB7B-AL-REF-SM	Reflector for 100W/150W HB7B High Bays
HB7B-AL-REF-LG	Reflector for 200W/240W HB7B High Bays
HB7B-PC-REF-SM-BCV	Bottom cover for HB7B-PC-REF-SM
HB7B-PC-REF-LG-BCV	Bottom cover for HB7B-PC-REF-LG
HB7B-SENSOR	Motion Sensor for HB7B High Bays
HB7B-REMOTE	Remote for HB7B-SENSOR
HB7B-PC-REF-SM	Reflector for 100W/150W HB7B High Bays
HB7B-PC-REF-LG	Reflector for 200W/240W HB7B High Bays



HB7B-SENSOR



HB7B-REMOTE



HB7B-AL-REF-LG



HB7B-WG-LG



HB7B-PC-REF-LG



HB7B-PC-REF-SM-BCV

BEST SELLER

THE LHB2 SERIES

Linear High Bays

Energy efficient replacement for traditional fluorescent fixtures and HID High Bays

Centre Knockout allows for Easy Installation of an Optional Motion Sensor

sold separately



Instant Start

with no flickering or humming



Soft and Uniform Light

makes it easier on the eyes

Long Lifespan

saves you time and money

Easy to Install and Operate

LHB2 SERIES MODELS

PRODUCT CODE	WATTS	CCT	LUMENS	VOLTAGE
LHB2-110W-40K-UD	110W	4000K	15,311 lm	120-347V
LHB2-110W-50K-UD	110W	5000K	15,509 lm	120-347V
LHB2-165W-40K-UD	165W	4000K	23,110 lm	120-347V
LHB2-165W-50K-UD	165W	5000K	23,364 lm	120-347V
LHB2-220W-40K-UD	220W	4000K	29,424 lm	120-347V
LHB2-220W-50K-UD	220W	5000K	30,108 lm	120-347V
LHB2-300W-40K-UD	300W	4000K	43,063 lm	120-347V
LHB2-300W-50K-UD	300W	5000K	43,547 lm	120-347V

LHB2 SERIES ACCESSORIES (SOLD SEPARATELY)

PRODUCT CODE	
LHB-110-165-WG	Wire Guard for 110W and 165W LHB2 High Bays
LHB-220-WG	Wire Guard for 200W LHB2 High Bays
LHB-300-WG	Wire Guard for 300W LHB2 High Bays
LHB-BRACKET-SM	Bracket for 110W, 165W, and 200W LHB2 High Bays
LHB-BRACKET-LG	Bracket for 300W LHB2 High Bays
HB01DMS-B	Motion Sensor
HB01R	Remote Control (Required for HB01DMS-B)

THE EXPL SERIES

Linear Explosion-Proof High Bays

Suitable for hazardous environments where flammable and/or combustible gases, vapours, liquids, fibres or dust may exist

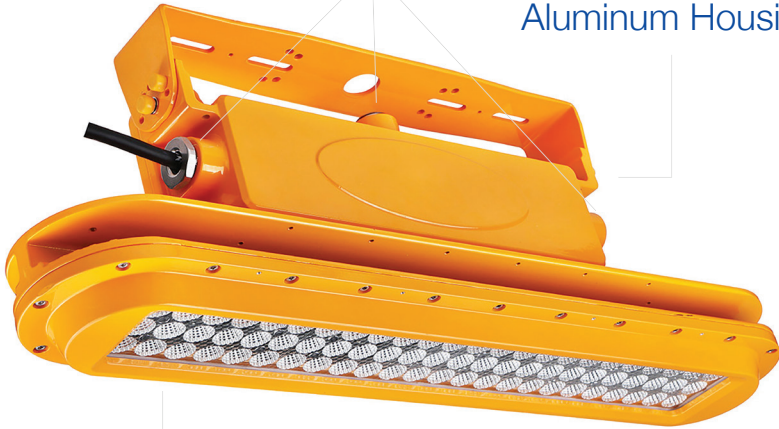
C1, D2 (Groups A,B,C,D)

IP66 Driver In
Separate Compartment
10kV surge protection



3 x 3/4" NPT
Conduit Entry Points
for added flexibility

Rugged Die Cast
Aluminum Housing



Tempered Glass Lens
allows for soft uniform light

Faceted Reflectors
in each LED chip for glare
control and beam precision

Pictured with EXPL-YK
(sold separately)

EXPL SERIES MODELS				
PRODUCT CODE	WATTS	CCT	LUMENS	VOLTAGE
EXPL-40W-2FT-50K	40W	5000K	5,881 lm	120-277V
EXPL-80W-4FT-50K	80W	5000K	11,202 lm	120-277V

EXPL SERIES ACCESSORIES (ORDERED SEPARATELY)	
PRODUCT CODE	
EXPL-WG-2FT	Wire Guard for EXPL 2ft fixtures
EXPL-WG-4FT	Wire Guard for EXPL 4ft fixtures
EXPL-YK	Yoke Mount for 2ft and 4ft fixtures

THE EXPR SERIES

Round Explosion-Proof High Bays

Suitable for hazardous locations,
wet locations, marine environments,
and high vibration applications

C1, D2 (Groups A,B,C,D)

IP66 Driver in
Separate Compartment
10kV surge protection



Rugged Die-Cast
Aluminum Housing



Tempered Glass Lens
allows for soft uniform light

Faceted Reflectors
in each LED chip for glare
control and beam precision

EXPR SERIES MODELS				
PRODUCT CODE	WATTS	CCT	LUMENS	VOLTAGE
EXPR-60W-50K	60W	5000K	8,870 lm	120-277V
EXPR-100W-50K	100W	5000K	15,967 lm	120-277V
EXPR-150W-50K	150W	5000K	23,834 lm	120-277V

EXPR SERIES ACCESSORIES (SOLD SEPARATELY)	
PRODUCT CODE	
EXPR-WG-SM	Wire Guard for EXPR 60W fixtures
EXPR-WG-LG	Wire Guard for EXPR 100W/150W fixtures



HB7B-150W-50K-UD

Amazing Lighting Replacement

"GREAT fixture for replacing older Warehouse lighting. Very bright and much lower wattage compared to the older Metal Halides."



VISIT OUR WEBSITE TO VIEW OUR FULL PRODUCT LINE

Contact your preferred electrical wholesaler for more information

Canopy Lights

Panel Lights

T-Grid

Corn Lamps

Security Lights

Vapour-Proof

Hazloc

Solar Lights

Work Lights

Horticultural

Street Lights

and more!

View and download our digital resources at www.csc-led.com

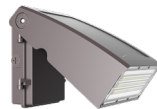
ASK FOR OUR OTHER BROCHURES AND CATALOGUES

FLOOD / AREA LIGHTS

WALL PACKS

Sleek, streamlined and versatile designs, suitable for a variety of different applications

Ideal for building entrances, schools, stairways, loading docks, institutions and more





Ontario Head Office

8 - 540 Jamieson Parkway
Cambridge, ON Canada N3C 0G5

orders@csc-led.com

(519) 880 - 9833

British Columbia Office

121-1647 Broadway Street
Port Coquitlam, BC Canada V3C 6P8

ordersbc@csc-led.com

(778) 730 - 0448

info@csc-led.com

CSCLED Sales Agencies

ALBERTA / SASKATCHEWAN

Sensible Adaptive Solutions

P: (403) 519-4209

(403) 869-8252

www.sensibleadaptive.com

ONTARIO

Roney Marketing Ltd.

P: (905) 595-1344

www.roneymk.com

BRITISH COLUMBIA

Ken Watt & Associates

P: (604) 576-2838

www.kenwattassoc.com

NEWFOUNDLAND AND LABRADOR

RWM Enterprises

P: (709) 682-4012

MANITOBA

TMC Sales

P: (204) 837-5036

www.tmcsales.ca

QUÉBEC

Éclairage Hi-Tech Inc.

P: (450) 442-7604

www.eclairagehitech.com



The information provided in our print catalogues and on our website has been gathered and assembled with every effort made to verify the accuracy of the content; however, mistakes can happen. The information in this document is subject to change without notice. If you have any questions or comments, please reach out to us at marketing@csc-led.com