



NEW

••CSCLED

BACKLIT PANEL LIGHTS

40W or 50W | 3500K, 4000K or 5000K | 100-347V
0-10V dimming | 1x4, 2x2 or 2x4

CSC LED backlit panel lights are designed to emit a bright, even output of light across your entire space. With the same depth profile as edge-lit panels and a non-yellowing frosted lens, these new panel lights are the perfect choice for offices, schools, hospitals, and more.

BACKLIT PANEL LIGHTS

OVERVIEW

The most attractive features of legacy edge-lit panels are price and slim form factor. Edge-lit panels are so slim they can fit into almost any busy plenum space as a versatile, low cost option.

The achilles heel of edge-lit panels is the light guide plate or LGP. While CSC LED only uses the highest quality LGP's from Mitsubishi, many manufacturers use a polymer material that will yellow over time.

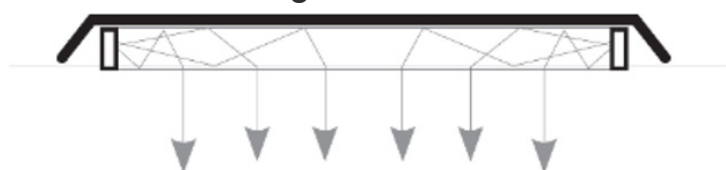
Recent breakthroughs in LED chip lensing have now made the backlit panel possible with even lower costs while still preserving the slim form factor. Backlit panels do not require

the expensive and sometimes problematic LGP and are virtually indistinguishable from their edge-lit predecessors when installed.

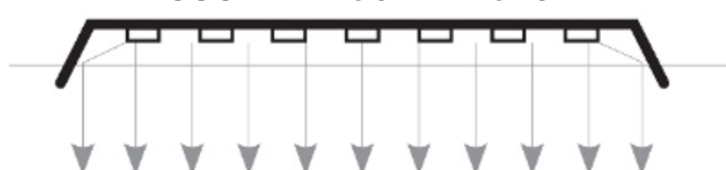
BACKLIT PANEL LIGHT ADVANTAGES:

- Lower cost
- Significantly lower weight
- Same depth profile as edge-lit panels
- Better LED life - heat is dissipated over a much larger area
- Non-yellowing frosted lens included
- CSC LED backlit panels come with 120-347V input for use in ANY application
- 0-10V dimming included

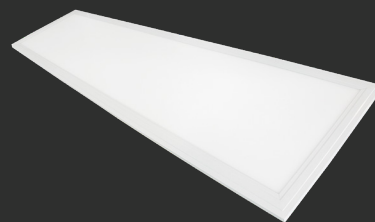
Edge-lit Panel



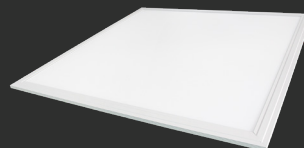
CSC LED Back-lit Panel



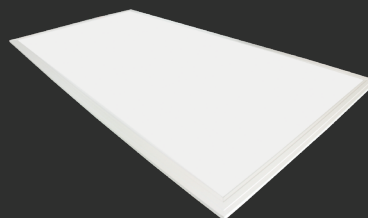
1x4



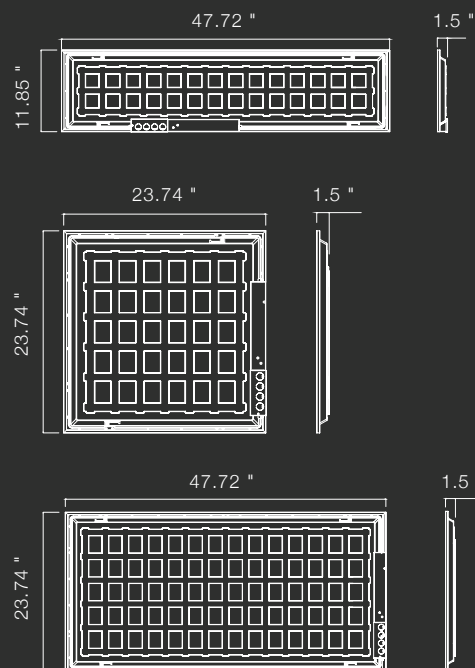
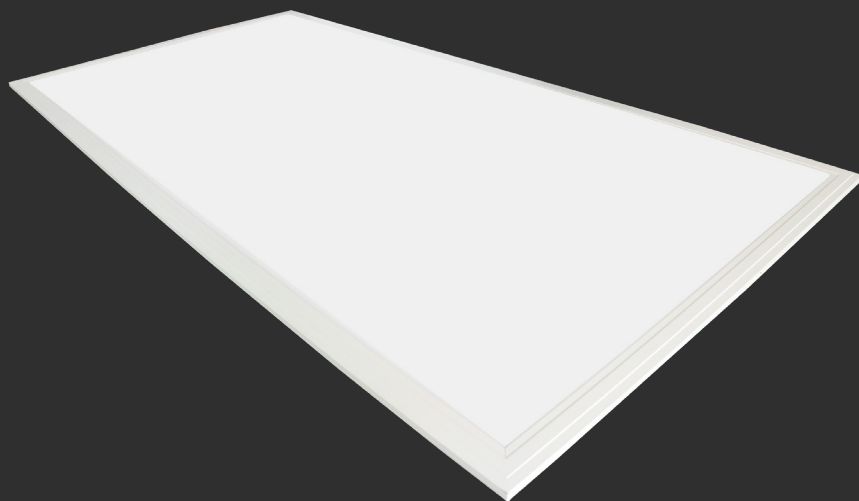
2x2



2x4



BACKLIT PANEL LIGHTS



APPLICATIONS: Ideal for offices, gymnasiums, schools, hospitals, and more.

PRODUCT #	SIZE	WATTS	VOLTAGE	CCT	LUMENS	EFFICACY	BEAM ANGLE	DLC #
PLBL14-40W-35K-UD	1 x 4	40W	100-347V	3500K	4,342 lm	109.53 lm/W	120°	PLAO7K0LARGP
PLBL14-40W-40K-UD	1 x 4	40W	100-347V	4000K	4,410 lm	110.11 lm/W	120°	PLL6Y0HVDYTG
PLBL14-40W-50K-UD	1 x 4	40W	100-347V	5000K	4,544 lm	112.34 lm/W	120°	PL9NKN9JF8EI
PLBL22-40W-35K-UD	2 x 2	40W	100-347V	3500K	4,697 lm	114.06 lm/W	120°	PLR6L6RBNIDG
PLBL22-40W-40K-UD	2 x 2	40W	100-347V	4000K	4,706 lm	115.00 lm/W	120°	PLS4E27L6FJJ
PLBL22-40W-50K-UD	2 x 2	40W	100-347V	5000K	4,725 lm	116.24 lm/W	120°	PLLTVYLPL2NJ
PLBL24-50W-35K-UD	2 x 4	50W	100-347V	3500K	4,908 lm	104.32 lm/W	120°	PLCXQXZ9X1BC
PLBL24-50W-40K-UD	2 x 4	50W	100-347V	4000K	4,964 lm	105.30 lm/W	120°	PLMLSRGMC0VI
PLBL24-50W-50K-UD	2 x 4	50W	100-347V	5000K	5,074 lm	107.43 lm/W	120°	PLLFVPO2OW7X

Listings: UL, DLC, Indoor use only.



Commercial and Industrial LED Lighting

1-888-900-9885 | info@csc-led.com | CSC-LED.COM

HEAD OFFICE

8-540 Jamieson Parkway
Cambridge, ON N3C 0G5
orders@csc-led.com

WESTERN CANADA

121-1647 Broadway St.
Port Coquitlam, BC V3C 6P8
ordersbc@csc-led.com

YOUR SALES AGENTS

ALBERTA / SASKATCHEWAN

Sensible Adaptive Solutions
P: 403.519.4209 or 403.869.8252
www.sensibleadaptive.com

NEWFOUNDLAND AND LABRADOR

RWM Enterprises
P: 709.682.4012

BRITISH COLUMBIA

Ken Watt & Associates
P: 604.576.2838
www.kenwattassoc.com

OTTAWA / GATINEAU

D2D Sales
P: 613-552-5373 or 613-327-6556
www.day2daysales.com

MANITOBA

TMC Sales
P: 204.837.5036
www.tmcsales.ca

QUÉBEC

Agence Vision Agency
P: 514.713.3849