

# FL04B Flood / Area Light

200W | 5000K | 120-347V

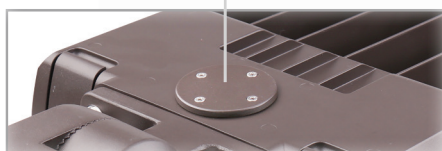


**TRUE UNIVERSAL POWER INPUT FROM 120-347V!**

A versatile, clean, and modern appearance that brings a pleasing aesthetic to any project

### Removable Access Plate

for easy field installation of twist lock photocell receptacle



### Type III Polycarbonate Optics

Type IV and V available

### Rugged Die Cast Aluminum Housing (Bronze)

### Pre-wired for Optional Motion Sensor

(Sensor & remote sold separately)



HB01R



HB01DMS-A



### Pressure Relief Respirator

for expansion/contraction

### Complete with Trunnion

Interchangeable mounting options sold separately

### Quick-Release, Hinged Access Cover

for control compartment

**Accessories (Ordered Separately):**

Yoke Mount, Slip Fit, Pole Mount, Multi Mount, Motion Sensor Remote, Motion Sensor, Type IV and V Optics, Photocell and Receptacle



FL04-YK-LG



FL04-SF



FL04-PM



FL04-MM



HB01R



HB01DMS-A

## TECHNICAL DATA



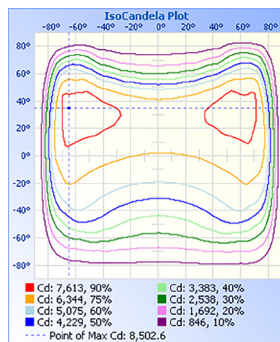
### LIGHT SPECIFICATIONS

Lumens	26,455 lm
Efficacy	130 lm/W
CCT	5000K
CRI	73
L70 Life	50,000 hrs
Dimmable	0-10V
Warranty	10-year

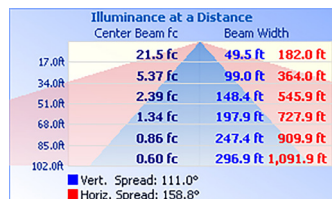
### APPROVALS AND LISTINGS

cUL	E482965
DLC	PL7EV0R10DUC

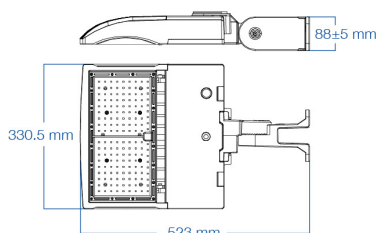
### ISOCANDELA



### ILLUMINANCE AT A DISTANCE



### DIMENSIONS (SHOWN WITH TRUNNION MOUNT)



### ELECTRICAL

Wattage	200W
Voltage	120-347V
Power Factor	0.9
THD	15%
Operating Temp	-30 to 50°C

### CONSTRUCTION

Housing	Die-Cast Aluminum
Cover	Polycarbonate
Finish	Bronze
IP Rating	IP65
EPA	1.32 ft²
Net Weight	5.97 kg
Gross Weight	6.72 kg
Carton Qty	1
Carton Dimensions	690 x 380 x 155 mm

### ACCESSORIES (SOLD SEPARATELY)

Slip Fit	FL04-SF
Pole Mount	FL04-PM
Multi Mount	FL04-MM
Yoke Mount	FL04-YK-LG
Motion Sensor	HB01DMS-A
Motion Sensor Remote	HB01R
Photocell and Receptable for 120-277V sites	JL-200 and JL-205LV
Photocell and Receptable for 277-480V sites	JL-200 and JL-207E
Shield	FL04B-SHIELD-SM
Type IV Optics	FL04B-TYPE-IV
Type V Optics	FL04B-TYPE-V