

FL04B Flood / Area Light

240W | 5000K | 120-347V

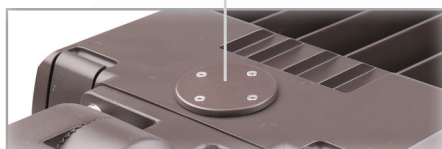


TRUE UNIVERSAL POWER INPUT FROM 120-347V!

A versatile, clean, and modern appearance that brings a pleasing aesthetic to any project

Removable Access Plate

for easy field installation of twist lock photocell receptacle



Pre-wired for Optional Motion Sensor

(Sensor & remote sold separately)

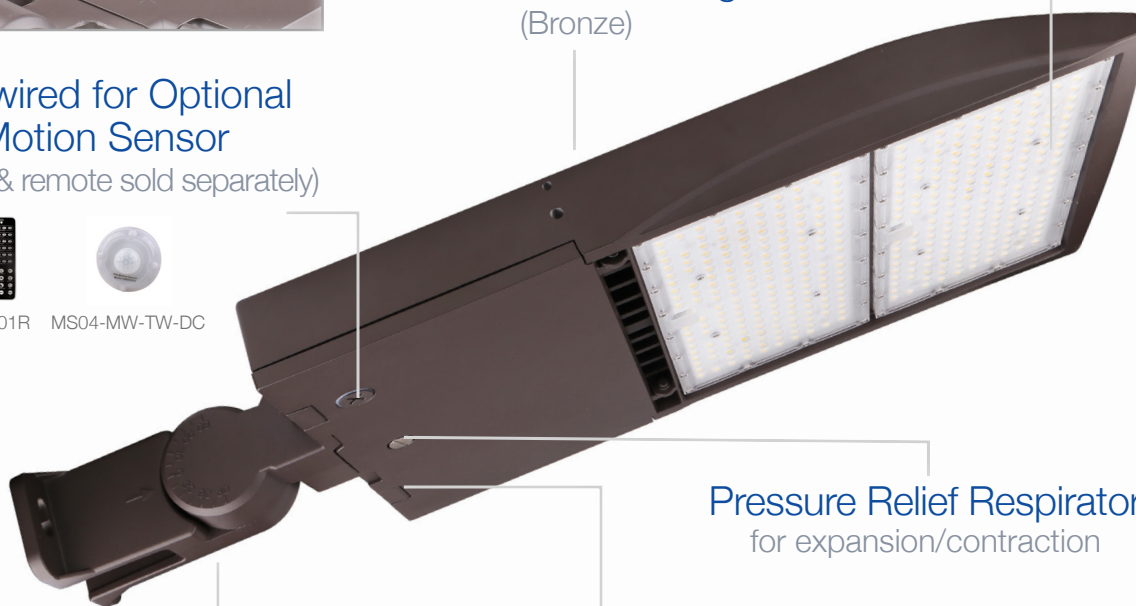


HB01R MS04-MW-TW-DC

Rugged Die Cast Aluminum Housing (Bronze)

Type III Polycarbonate Optics

Type IV and V available



Pressure Relief Respirator

for expansion/contraction

Quick-Release, Hinged Access Cover

for control compartment

Complete with Trunnion

Interchangeable mounting options sold separately

Accessories (Ordered Separately):

Yoke Mount, Slip Fit, Pole Mount, Multi Mount, Motion Sensor Remote, Motion Sensor, Type IV and V Optics, Photocell and Receptacle, Shield



FL04-YK-HG



FL04-SF



FL04-PM



FL04-MM



HB01R



MS04-MW-TW-DC

TECHNICAL DATA



LIGHT SPECIFICATIONS

Lumens	34,805 lm
Efficacy	141 lm/W
CCT	5000K
CRI	73
L70 Life	50,000 hrs
Dimmable	0-10V
Warranty	10-year

APPROVALS AND LISTINGS

cUL	E482965
DLC	PLVVQUVWNI3G

ISOCANDELA

