

FL04B Flood / Area Light

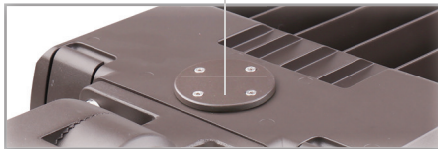
450W | 4000K | 120-347V



TRUE UNIVERSAL POWER INPUT FROM 120-347V!

A versatile, clean, and modern appearance that brings a pleasing aesthetic to any project

Removable Access Plate
for easy field installation of
twist lock photocell receptacle



Rugged Die Cast Aluminum Housing
(Bronze)



Complete with Trunnion
Interchangeable mounting
options sold separately

Pressure Relief Respirator
for expansion/contraction

Quick-Release, Hinged Access Cover
for control compartment

Accessories (Ordered Separately):
Yoke Mount, Slip Fit, Pole Mount, Multi Mount, Motion Sensor
Remote, Motion Sensor, Photocell and Receptacle, Shield



FL04-YK-HG



FL04-SF



FL04-PM



FL04-MM



HB01R



HB01DMS-B

TECHNICAL DATA



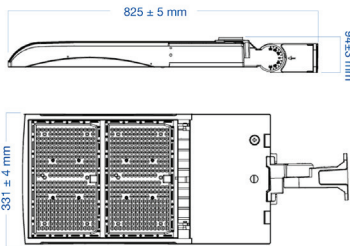
LIGHT SPECIFICATIONS

Lumens	62,228 lm
Efficacy	138 lm/W
CCT	4000K
CRI	> 70
L70 Life	> 54,000 hrs
Dimmable	0-10V
Warranty	10-year

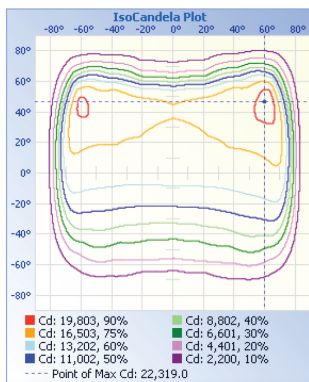
APPROVALS AND LISTINGS

cUL	E482965
DLC Premium	PLREAQFBZKXH

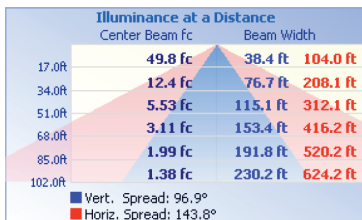
DIMENSIONS (SHOWN WITH TRUNNION MOUNT)



ISOCANDELA



ILLUMINANCE AT A DISTANCE



ELECTRICAL

Wattage	450W
Voltage	120-347V
Power Factor	> 0.9
THD	< 15%
Operating Temp	-40 to 50°C

CONSTRUCTION

Housing	Die-Cast Aluminum
Cover	Polycarbonate
Finish	Bronze
IP Rating	IP65
EPA	2.31 ft²
Net Weight	9.32 kg
Gross Weight	10.32 kg
Carton Qty	1
Carton Dimensions	915 x 380 x 155 mm

ACCESSORIES (SOLD SEPARATELY)

Slip Fit	FL04-SF
Pole Mount	FL04-PM
Multi Mount	FL04-MM
Yoke Mount	FL04-YK-HG
Motion Sensor	HB01DMS-B
Motion Sensor Remote	HB01R
Photocell and Receptacle for 120-277V sites	JL-200 and JL-205LV
Photocell and Receptacle for 277-480V sites	JL-200 and JL-207E
Shield	FL04B-SHIELD-LG