

FL04B Flood / Area Light

60W | 4000K | 120-347V

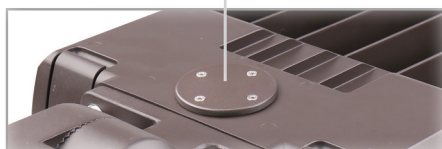


TRUE UNIVERSAL POWER INPUT FROM 120-347V!

A versatile, clean, and modern appearance that brings a pleasing aesthetic to any project

Removable Access Plate

for easy field installation of twist lock photocell receptacle



Pre-wired for Optional Motion Sensor

(Sensor & remote sold separately)



HB01R



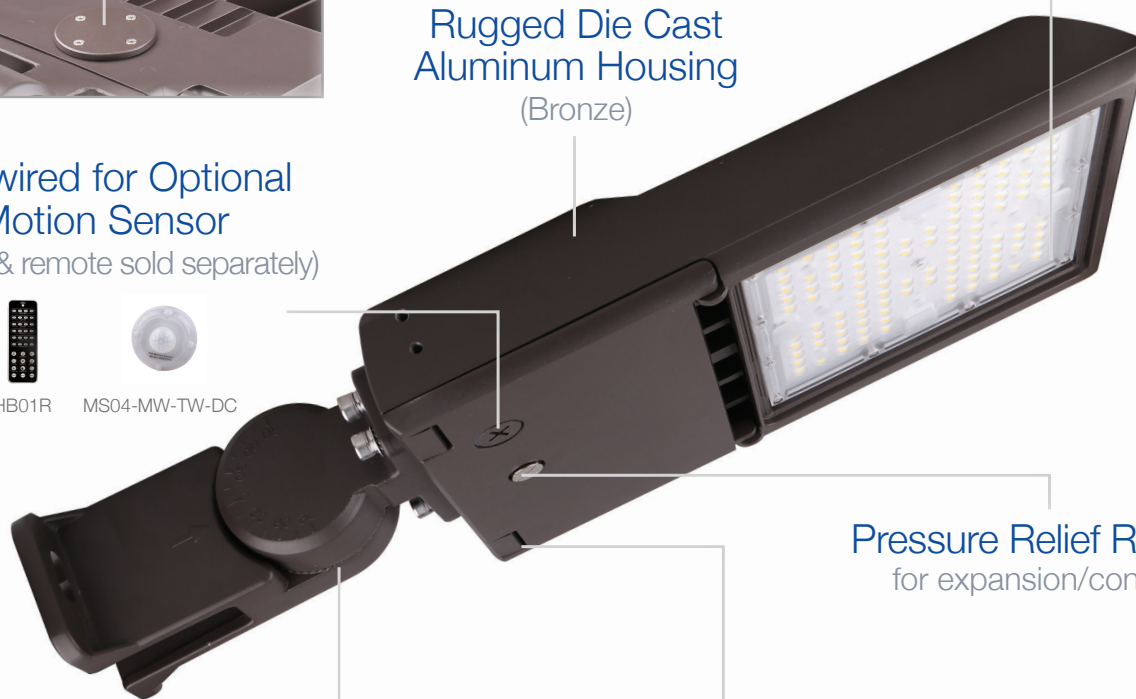
MS04-MW-TW-DC

Rugged Die Cast Aluminum Housing

(Bronze)

Type III Polycarbonate Optics

Type IV and V available



Pressure Relief Respirator

for expansion/contraction

Complete with Trunnion

Interchangeable mounting options sold separately

Quick-Release, Hinged Access Cover

for control compartment

Accessories (Ordered Separately):
Slip Fit, Pole Mount, Multi Mount, Motion Sensor Remote, Motion Sensor, Photocell and Receptacle



FL04-SF



FL04-PM



FL04-MM



HB01R



MS04-MW-TW-DC

TECHNICAL DATA



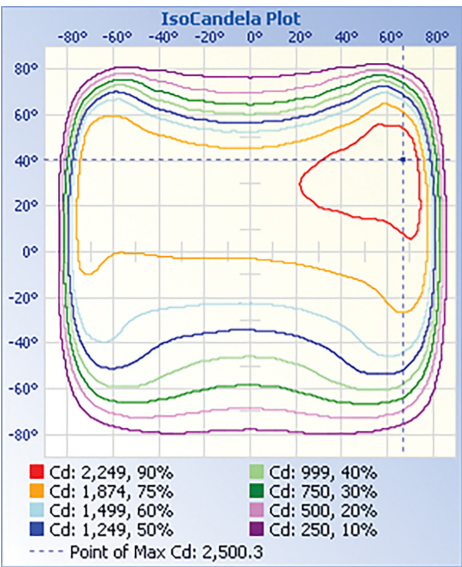
LIGHT SPECIFICATIONS

Lumens	8,123 lm
Efficacy	136 lm/W
CCT	4000K
CRI	73
L70 Life	50,000 hrs
Dimmable	0-10V
Warranty	10-year

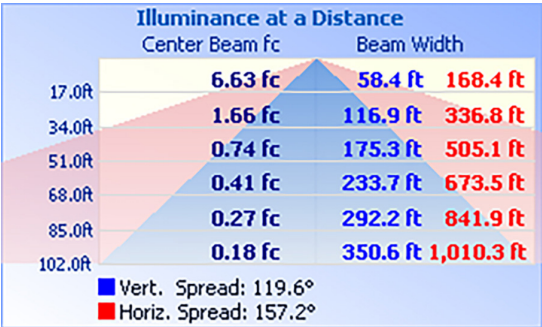
APPROVALS AND LISTINGS

cUL	E482965
DLC	PLY9N8AJ8IOL

ISOCANDELA



ILLUMINANCE AT A DISTANCE



ELECTRICAL

Wattage	60W
Voltage	120-347V
Power Factor	0.9
THD	15%
Operating Temp	-30 to 50°C

CONSTRUCTION

Housing	Aluminum
Cover	Polycarbonate
Finish	Bronze
IP Rating	IP65
EPA	2.37 ft²
Net Weight	4.26 kg
Gross Weight	5.26 kg
Carton Qty	1
Carton Dimensions	710 x 295 x 155 mm

ACCESSORIES (SOLD SEPARATELY)

Slip Fit	FL04-SF
Pole Mount	FL04-PM
Multi Mount	FL04-MM
Motion Sensor	MS04-MW-TW-DC
Motion Sensor Remote	HB01R
Photocell and Receptable	JL-200 and JL-205LV for 120-277V site
Photocell and Receptable	JL-200 and JL-207E for 277-480V site

DIMENSIONS (SHOWN WITH TRUNNION MOUNT)

