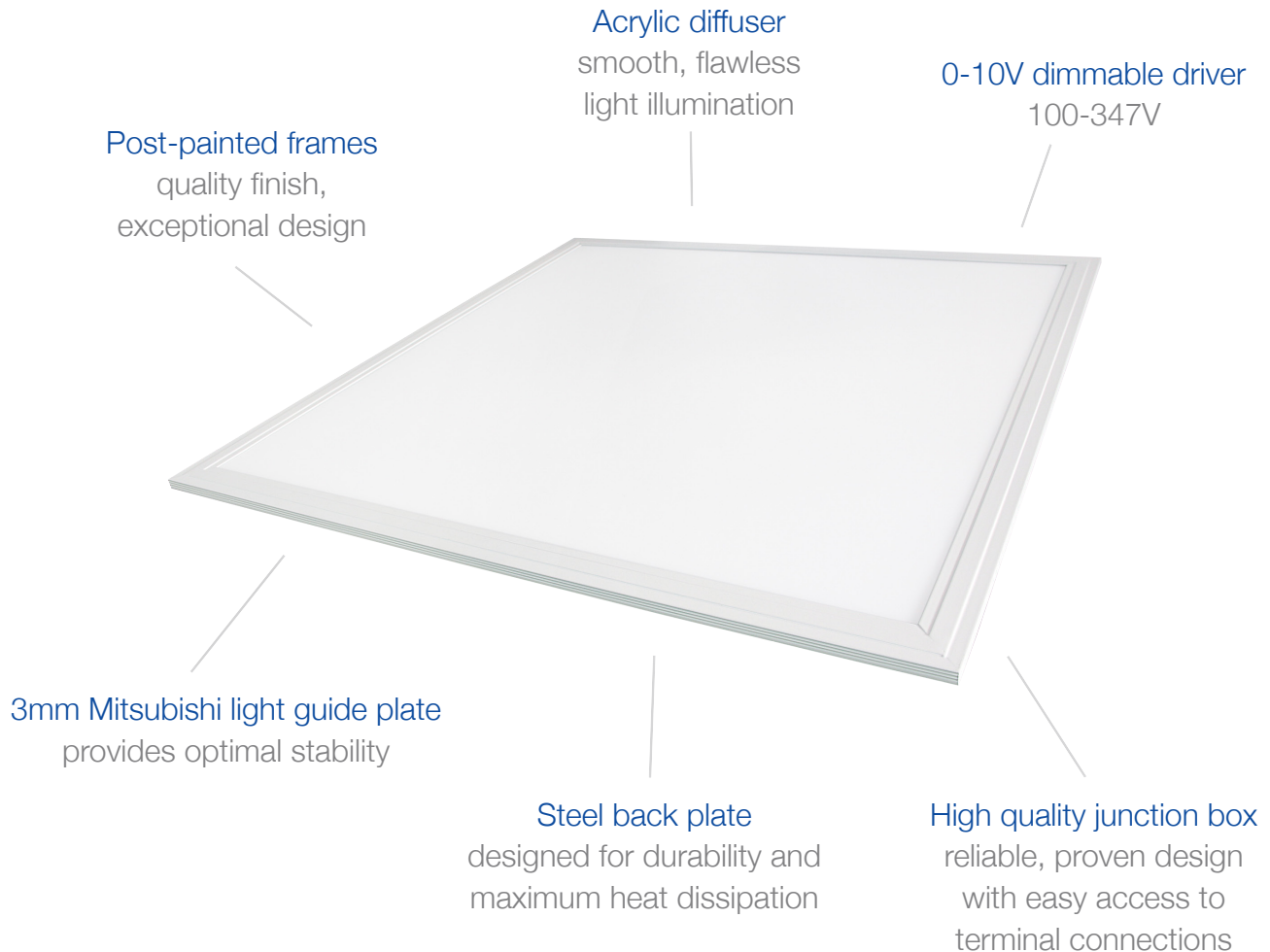


Premium Panel Light

30W | 5000K | 2x2

Ideal for office lighting, basement lighting, light box and sign back-lighting, gym lighting, school lighting, hospital lighting and more.



Optional Surface Mount Kits and Cable Kits available, sold separately.
See reverse for details and ordering information.



TECHNICAL DATA



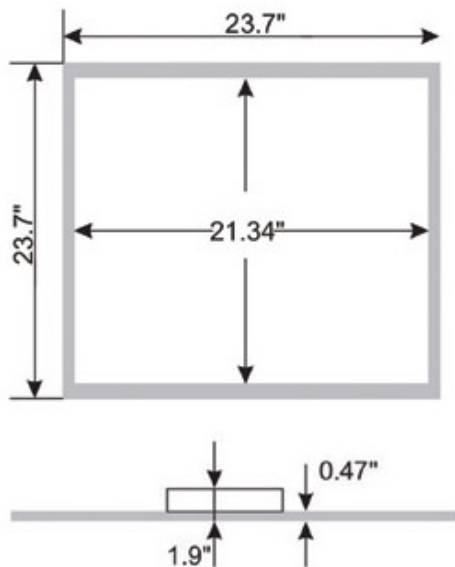
LIGHT SPECIFICATIONS

Lumens	4,028
Efficacy	127 lm/W
CCT	5000K
CRI	83
Dimmable	0-10V
Rated Hours	50,000
Warranty	7-year

APPROVALS AND LISTINGS

cUL	E491106
-----	---------

DIMENSIONS



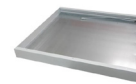
ELECTRICAL

Wattage	30W
Voltage	100-347V
Power Factor	0.87
THD	19.06 %
Operating Temp	-20° to 40°C

CONSTRUCTION

Framing	Aluminum Alloy
Colour	White
IP rating	IP54
Carton qty	4

ACCESSORIES (Ordered Separately)



Surface Mount Kits PL22-SK



Cable Kits PL22-CABLE-KIT