

# 2'x 4' Premium Panel

30W, 40W, 50W Selectable | Colour Selectable | 120-347V

High performance, light-weight luminaires suitable for lay-in, surface or pendant mounting. Ideal for use in schools, health care applications, offices, retail spaces, and more

0-10V Dimming Lead on Both Sides of Driver Junction Box

Use Switches to Select Colour Temperature and Wattage



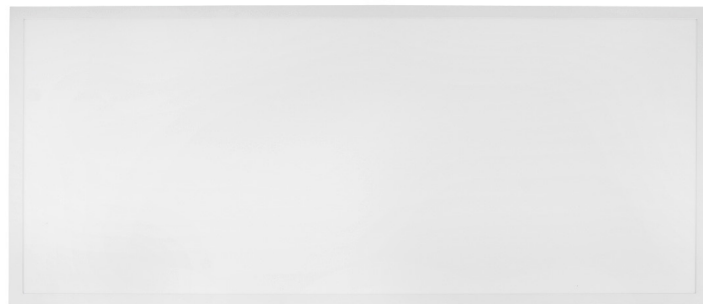
Non-yellowing Frosted Lens



Power Selectable  
(30W / 40W / 50W)



Colour Selectable  
(3000K / 3500K / 4000K)



120-347V, 0-10V Dimmable Driver

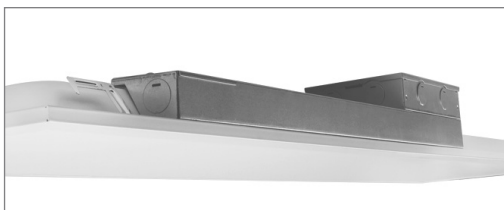


Less than 1.8" Deep  
ideal for tight plenum areas

Seismic Clips Included



Waffle Stamping  
increases heat dissipation and driver life



Junction Box (PLS-JB)  
sold separately

Accessories (Sold Separately)



Suspension Kit  
PLS-SUSKIT



Surface Mount Kit  
PLS24-SK



Junction Box  
PLS-JB



Recessed Frame Kit  
PLS24-RFK

## TECHNICAL DATA



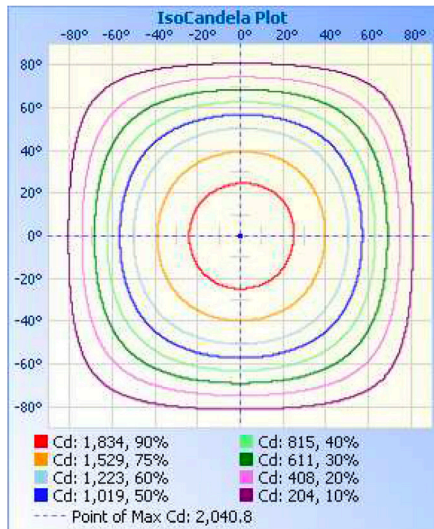
### LIGHT SPECIFICATIONS

Lumens	6,250 lms @ 3000K
Efficacy	125 lm/W
CCT	Selectable (30K/35K/40K)
CRI	80
Dimmable	0-10V
Beam Angle	120°
L70 Life	50,000 hrs
Warranty	7-year

### APPROVALS AND LISTINGS

ETL	5000444
DLC Premium	S-D7YN9G

### ISOCANDELA PLOT



### ILLUMINANCE AT A DISTANCE

	Center Beam fc	Beam Width	
17.0ft	7.05 fc	52.4 ft	52.1 ft
34.0ft	1.76 fc	104.7 ft	104.2 ft
51.0ft	0.78 fc	157.1 ft	156.3 ft
68.0ft	0.44 fc	209.5 ft	208.4 ft
85.0ft	0.28 fc	261.9 ft	260.5 ft
102.0ft	0.20 fc	314.2 ft	312.6 ft

■ Vert. Spread: 114.0°  
■ Horiz. Spread: 113.7°

### ELECTRICAL

Wattage	Selectable (30W/40W/50W)
Voltage	120-347V
Power Factor	0.9
THD	6%
Operating Temp	-20 to 40°C

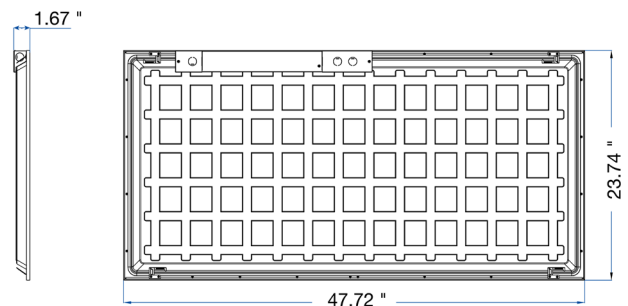
### CONSTRUCTION

Housing	Metal
Lens Type	Frosted
Finish	White
IP Rating	IP20
Product Dimensions	23.75 x 47.72 x 1.67 in
Carton Qty	4

### ACCESSORIES (SOLD SEPARATELY)

PLS24-SK	Surface Mount Kit
PLS24-RFK	Recessed Frame Kit
PLS-SUSKIT	Suspension Kit
PLS-JB	Junction Box

### DIMENSIONAL DRAWINGS (IN)



HEAD OFFICE: 8 - 540 Jamieson Pkwy, Cambridge, ON, N3C 0G5 | [orders@csc-led.com](mailto:orders@csc-led.com) | (519) 880 - 9833