

# 2'x 2' Panel

20W, 30W, 40W Selectable | 4000K | 120-277V

High performance, light-weight luminaires suitable for lay-in, surface or pendant mounting. Ideal for use in schools, health care applications, offices, retail spaces, and more

Less than 1.8" Deep  
ideal for tight plenum areas

Use Switch to  
Select Wattage



0-10V Dimming Lead on Both  
Sides of Driver Junction Box

120-277V, 0-10V  
Dimmable Driver

Power Selectable  
(20W / 30W / 40W)

Seismic Clips  
Included

Non-yellowing  
Frosted Lens

Waffle Stamping  
increases heat dissipation  
and driver life

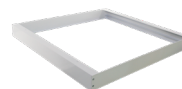


Junction Box (PLS-JB)  
sold separately

Accessories (Sold Separately)



Suspension Kit  
PLS-SUSKIT



Surface Mount Kit  
PLS22-SK



Junction Box  
PLS-JB



Recessed Frame Kit  
PLS22-RFK

## TECHNICAL DATA



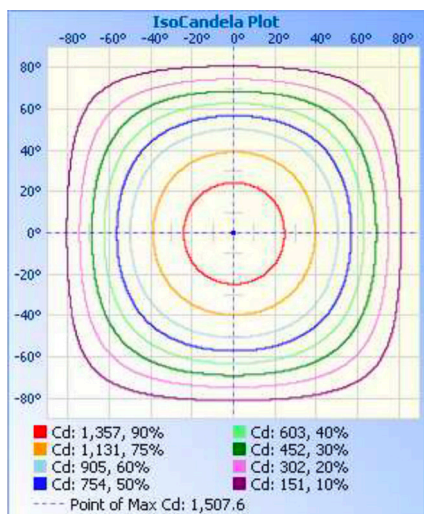
### LIGHT SPECIFICATIONS

Lumens	4,375 lms
Efficacy	107 lm/W
CCT	4000K
CRI	84
Dimmable	0-10V
Beam Angle	120°
L70 Life	50,000 hrs
Warranty	7-year

### APPROVALS AND LISTINGS

ETL	5000444
DLC	S-8PSYB9

### ISOCANDELA PLOT



### ILLUMINANCE AT A DISTANCE

	Center Beam fc	Beam Width	
17.0ft	5.22 fc	52.3 ft	51.8 ft
34.0ft	1.30 fc	104.6 ft	103.6 ft
51.0ft	0.58 fc	157.0 ft	155.4 ft
68.0ft	0.33 fc	209.3 ft	207.2 ft
85.0ft	0.21 fc	261.6 ft	259.0 ft
102.0ft	0.14 fc	313.9 ft	310.8 ft

■ Vert. Spread: 114.0°  
■ Horiz. Spread: 113.4°

### ELECTRICAL

Wattage	Selectable (20W/30W/40W)
Voltage	120-277V
Power Factor	0.94
THD	11.4 %
Operating Temp	-20 to 40°C

### CONSTRUCTION

Housing	Metal
Lens Type	Frosted
Finish	White
IP Rating	IP20
Product Dimensions	23.75 x 23.75 x 1.67 in
Carton Qty	4

### ACCESSORIES (SOLD SEPARATELY)

PLS22-SK	Surface Mount Kit
PLS22-RFK	Recessed Frame Kit
PLS-SUSKIT	Suspension Kit
PLS-JB	Junction Box

### DIMENSIONAL DRAWINGS (IN)

