

# Street Light

100W | 4000K | 100-277V



Ideal for outdoor applications such as municipal street lighting, parking lots, construction sites, storage and rail yards, industrial locations, marinas, and more.

Twist lock photocell receptacle included

*\*Accessories required (ordered separately)*



**\* Required Accessories (ordered separately):**

A Photocell (JL-205LV) or a Shorting Cap (JL-208) **must** be added.



JL-205LV



JL-208

## TECHNICAL DATA



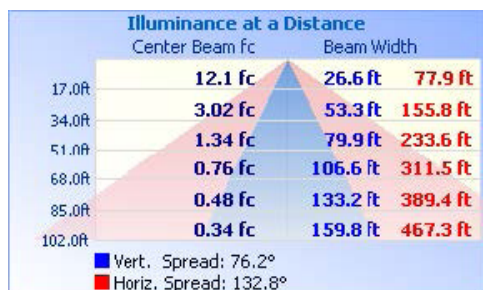
## LIGHT SPECIFICATIONS

Lumens	12,637 lm
Efficacy	128 lm/W
CCT	4000K
CRI	70
L70 Life	100,000 hrs
Dimmable	0-10V
Warranty	10-year

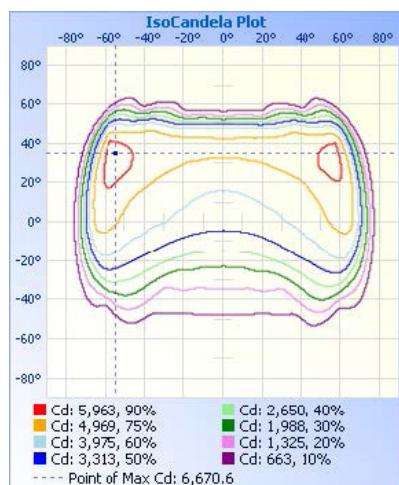
## APPROVALS AND LISTINGS

cUL	E482965
DLC Premium	PLAPOM9L5YPK

## ILLUMINANCE AT A DISTANCE



## ISOCANDELA PLOT



## ELECTRICAL

Wattage	100W
Voltage	100 - 277V
Power Factor	0.9
THD	15%
Operating temp	-40 to 40°C

## CONSTRUCTION

Housing	Aluminum
Finish	Grey
IP Rating	IP65
Weight	5.18 lbs
Carton qty	1

## ACCESSORIES (Ordered Separately)

Photocell	JL-205LV
Shorting Cap	JL-208

**IMPORTANT:** Includes Twist Lock Receptacle. A Photocell or a Shorting Cap must be added and is ordered separately.

## DIMENSIONS

