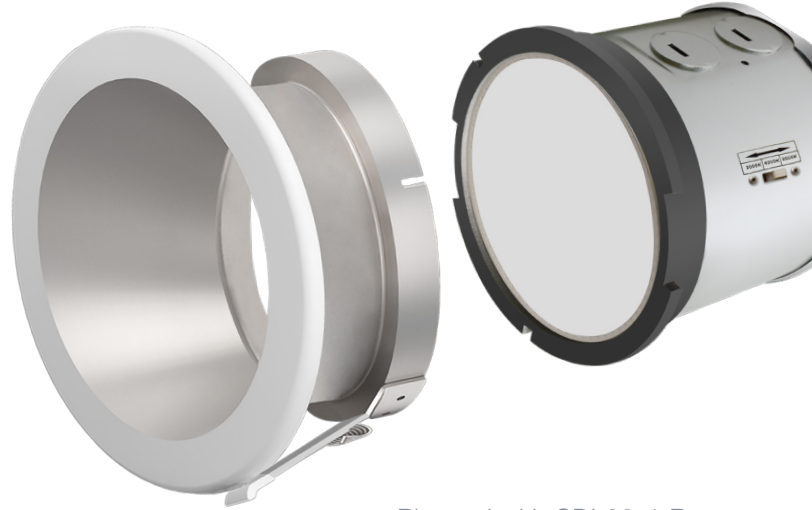


CDL02

Commercial Downlights

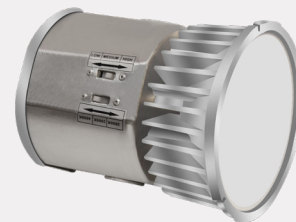


Pictured with CDL02-4-R
(sold separately)

CSC LED's **CDL02 Commercial Downlights** allow you to achieve a custom look with these sleek and easy-to-install, colour selectable, commercial downlights.



- Twist and Lock for easy, tool-free reflector installation
- Colour Selectable (3000K / 4000K / 5000K)
- 120-347V Universal Driver with 4kV surge protection
- Recessed Matte Diffuser when paired with reflector (reflectors sold separately)
- Built-in Junction Box
- 55° or 70° Beam Angle



Power Selectable Option Available



Wattage

15W-20W,
27W / 34W / 40W



Lumens

1,125 lm - 3,200 lm



Voltage

120-347V



CCT

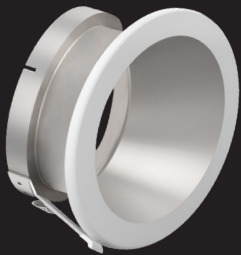
3000K / 4000K / 5000K,
3000K / 3500K / 4000K

CDL02 Commercial Downlights

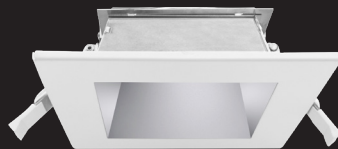
PRODUCT #	WATTS	VOLTAGE	CCT	LUMENS	EFFICACY
CDL02-15W-3CCT-UD	15W	120-347V	3000K / 4000K / 5000K	*1,125 lm	70 lm/W
CDL02-20W-3CCT-UD	20W	120-347V	3000K / 4000K / 5000K	*1,400 lm	70 lm/W
CDL02-40WS-3CCT-UD	27W / 34W / 40W	120-347V	3000K / 3500K / 4000K	**3,200 lm	75 lm/W
CDL02-4-R	4" Round Reflector				
CDL02-4-R-WW	4" Round Wall Wash Reflector				
CDL02-4-S	4" Square Reflector				
CDL02-6-R	6" Round Reflector				
CDL02-8-R	8" Round Reflector				

*shown at 5000K
 **shown at 40W | 4000K

Optional Accessories (sold separately)



CDL02-4-R



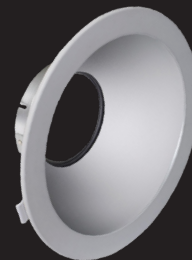
CDL02-4-S



CDL02-6-R



CDL02-4-R-WW



CDL02-8-R