



## Commercial and Industrial LED Lighting Solutions

2025 LINE CARD



# Join Our Spotted On Site Series!

Discover how our products are being put to work in real-life projects through our Spotted On Site series! We love seeing our products in action, and we truly appreciate all the photo submissions showcasing their use. If you'd like to be featured, simply send us your project photos along with the specs to [marketing@csc-led.com](mailto:marketing@csc-led.com). We can't wait to see how you're using our products!

Scan to submit  
your Spotted On  
Site Photos!



## PTA02 Spotted in BC



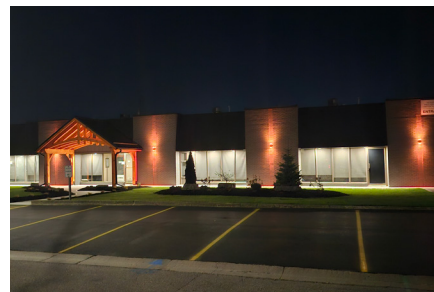
**PTA02-100W-3CCT-UD**  
100W | 3CCT | 120-347V | 11870 lm

## FL05 Spotted in ON



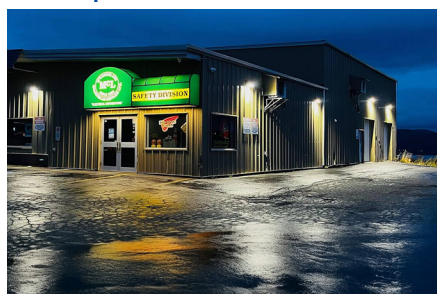
**FL05-150W-3P-3CCT-UD-BZ**  
100W/125W/150W | 3CCT | 120-347V  
13838-20635 lm

## WCYL Spotted in ON



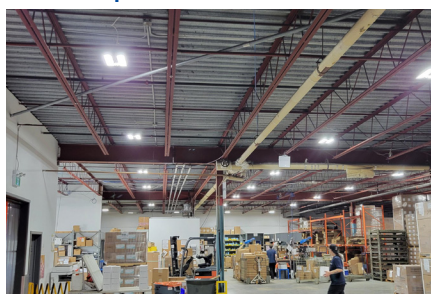
**WCYL-DI-30W-RGBW-LV**  
30W | RGBW | 120-277V | Direct/Indirect  
270-1230 lm

## KWP Spotted in NL



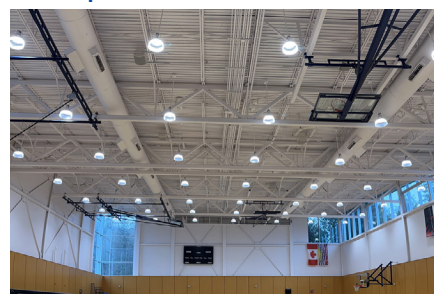
**KWP-40W-3P-3CCT-UD-BZ**  
20W/30W/40W | 3CCT | 120-347V  
3649-6599 lm  
**KWP-80W-3P-3CCT-UD-BZ**  
40W/60W/80W | 3CCT | 120-347V  
7649-14211 lm

## LHB04 Spotted in ON



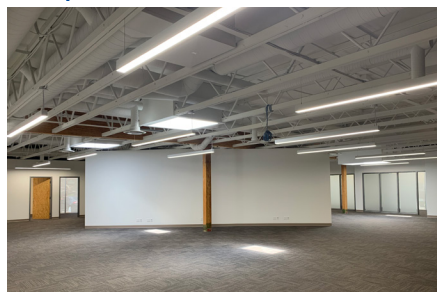
**LHB04-110W-3P-3CCT-UD-WH**  
70W/90W/110W | 3CCT | 120-347V  
10318-16113 lm

## HB8 Spotted in BC



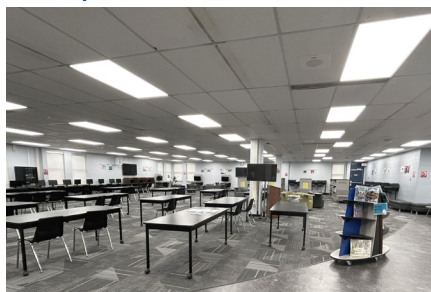
**HB8-240W-3P-3CCT-UD-WH**  
200W/220W/240W | 3CCT | 120-347V  
27842-35550 lm

## AL Spotted in ON



**AL8-D-80W-3CCT-UD**  
80W | 3CCT | 120-347V | Direct | 9263 lm

## PLP Spotted in ON



**PLP24-50W-3P-3CCT-UD**  
2' x 4' | 30W/40W/50W | 3CCT | 120-347V  
3918-6478 lm

## FL04B Spotted in AB



**FL04B-100W-30K-UD**  
100W | 3000K | 120-347V | 13584 lm

The information provided in our print catalogues and on our website have been gathered and assembled with every effort made to verify the accuracy of the content; however, mistakes can happen. The information in this document is subject to change without notice.

**Contractors: Please contact your preferred electrical wholesaler for more information and to place your order**  
If you have any questions or comments, please reach out to us at [marketing@csc-led.com](mailto:marketing@csc-led.com)



# TABLE OF CONTENTS

## Contents

|                   |         |
|-------------------|---------|
| About Us          | Page 3  |
| Distributor Perks | Page 4  |
| Rewards Program   | Page 5  |
| DarkSky           | Page 25 |
| Sales Agents      | Page 27 |

## Product Type

|                   |         |
|-------------------|---------|
| Area Lights       | Page 9  |
| Bollards          | Page 9  |
| Canopy Lights     | Page 15 |
| Cylinders         | Page 10 |
| Downlights        | Page 24 |
| Flood/Area Lights | Page 6  |
| Hazloc            | Page 24 |
| High Bays         | Page 12 |
| Linears           | Page 18 |
| Panels/Troffers   | Page 15 |
| Security Lights   | Page 24 |
| Vapour Proofs     | Page 20 |
| Wall Packs        | Page 21 |
| Work Lights       | Page 24 |

## CHECK OUT Our Youtube Channel



Explore our Youtube channel where you'll discover an array of informational content, including insightful product videos, unboxing experiences, an exclusive peek into our state-of-the-art Mobile Showroom, and much more!



Scan to Visit our Channel!

## ABOUT US

CSC LED (formerly Earth-Line SSL) has been in the LED industry since 2005, delivering affordable and reliable LED products built with top-tier components, such as premium chips, drivers, and thermal management.

### Why Choose Our Products?

- Tier 1 quality at competitive prices.
- Our products use premium materials and finishes used in higher-priced products in the marketplace.

High-quality products, competitive pricing, and exceptional service—that's CSC LED.

### What Sets Us Apart?

- Deep industry knowledge: Our diverse team understands the needs of distributors, electricians, contractors, and more.
- Customer-first approach: We prioritize strong partnerships with tools like 24/7 online pricing and inventory access.
- Proven reliability: With 20+ years in business, we've outlasted our warranties—something few competitors can claim.

# CALLING ALL DISTRIBUTORS

Sign up for an account on our  
**Online Distributor Portal**

## DISTRIBUTOR PORTAL PERKS



**FREE** nationwide shipping  
on all orders over \$250\*\*



Place your orders from  
anywhere, at any time,  
on any device



Receive a **2% discount** on  
every order placed through  
our online portal



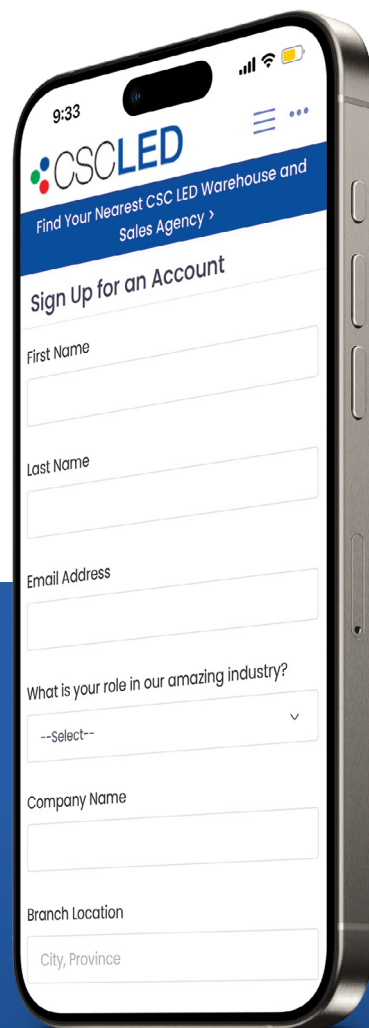
View order details, tracking  
numbers, previous orders,  
and more



View **live inventory counts**  
in all 3 of our warehouses,  
including incoming shipment  
ETAs and branch transfers



Scan to sign up!



## DON'T HAVE AN ACCOUNT?

Signing up is quick and easy!

- 1 Visit [www.csc-led.com](http://www.csc-led.com)
- 2 Click "Sign Up" in the top right corner
- 3 Receive your approval email from our team within 1 business day



# CALLING ALL CONTRACTORS

## YET ANOTHER REASON TO CHOOSE CSC LED

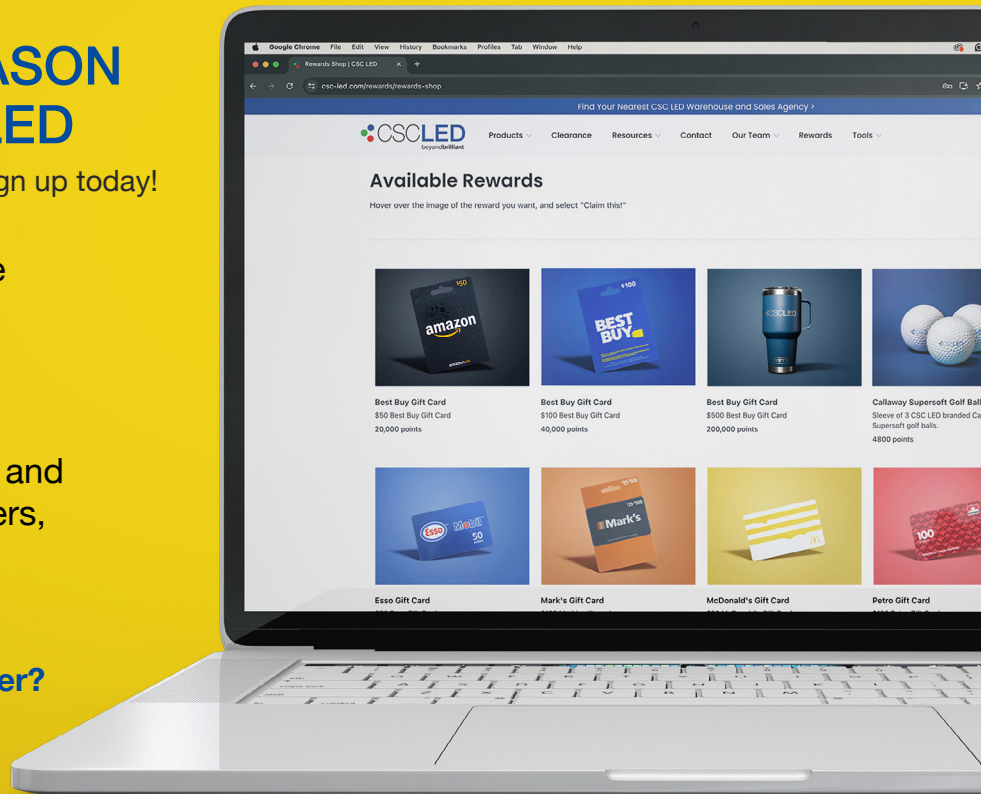
Visit [www.csc-led.com/rewards](http://www.csc-led.com/rewards) to sign up today!

Earn points when you purchase CSC LED products from your preferred electrical wholesaler.

Use your points for awesome rewards items like Tim Hortons and Amazon Gift Cards, Yeti Tumblers, Callaway Golf Balls, and more!



**Not a Rewards Member?**  
Joining is free and easy!



### Upload Packing Slip

Upload a picture of your packing slip or invoice to your Rewards online account.



### Earn Points

Automatically earn points on all CSC LED products you purchase.



### Gain Rewards

Redeem your points for gift cards, Yeti tumblers, Roots hoodies, and more!

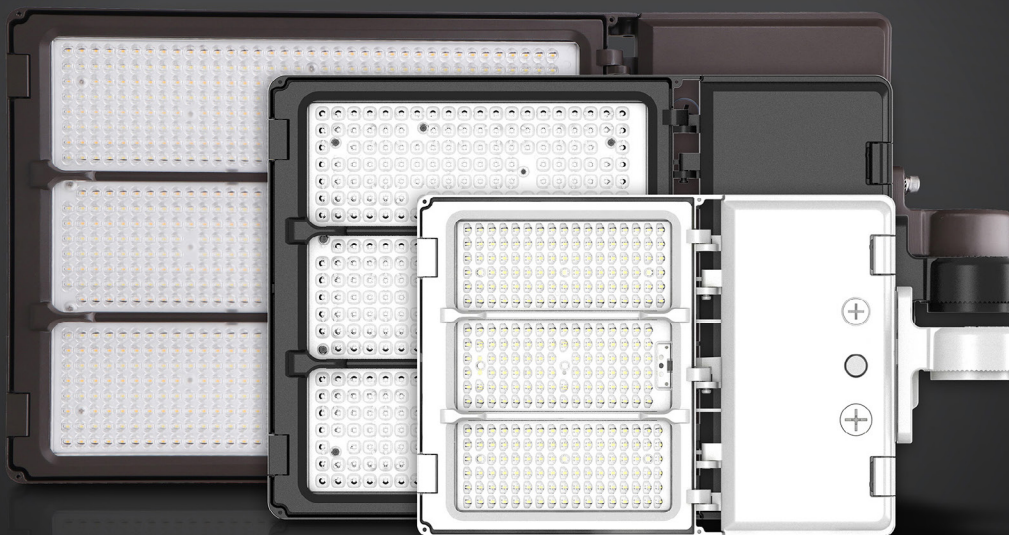
Register with **CODE: LINECARD2025** for 5000 bonus points!

# flex

## FL05 FLOOD / AREA LIGHTS

The FL05 Flex series Flood/Area Lights from CSC LED offer easy installation with quick-release latches and field-interchangeable optics. Adjust power, colour temperature, voltage, and benefit from 0-10V dimming for flexible configurations—no special orders needed.

Enjoy long-term flexibility with post-installation adjustments to suit your lighting needs, ensuring optimal performance in any setting.



| Fixtures  | Wattage            | CCT             | Voltage  | Lumens         | Finish                   |
|---|--------------------|-----------------|----------|----------------|--------------------------|
| FL05-100W-3P-3CCT-UD-BZ<br>FL05-100W-3P-3CCT-UD-BK                            | 60W / 80W / 100W   | 30K / 40K / 50K | 120-347V | 8825-14865 lm  | Bronze<br>Black          |
| FL05-150W-3P-3CCT-UD-BZ<br>FL05-150W-3P-3CCT-UD-BK<br>FL05-150W-3P-3CCT-UD-WH | 100W / 125W / 150W | 30K / 40K / 50K | 120-347V | 13838-20635 lm | Bronze<br>Black<br>White |
| FL05-240W-3P-3CCT-UD-BZ<br>FL05-240W-3P-3CCT-UD-BK                            | 180W / 210W / 240W | 30K / 40K / 50K | 120-347V | 25604-34576 lm | Bronze<br>Black          |
| FL05-300W-3P-3CCT-UD-BZ<br>FL05-300W-3P-3CCT-UD-BK<br>FL05-300W-3P-3CCT-UD-WH | 260W / 280W / 300W | 30K / 40K / 50K | 120-347V | 33987-40953 lm | Bronze<br>Black<br>White |
| FL05-450W-3P-3CCT-UD-BZ   | 350W / 400W / 450W | 30K / 40K / 50K | 120-347V | 44114-61020 lm | Bronze                   |

**Choose your Mount!**  
Available in Bronze, Black,  
and White (sold separately)







## KEY FEATURES

This series features quick-release latched doors for easy access to the driver housing and lens frame, as well as quick, field-interchangeable optics. For added versatility, an optional visor (sold separately) is available with two installation options. Additionally, the fixture is compatible with motion sensors and photocells (sold separately), boosting both functionality and efficiency!



## MOUNTING OPTIONS

Our FL05 mounts are sold separately to reduce excess waste, simplify storage and shipping, and save you money—ensuring you never pay for a mount you won't use! The FL05 is DarkSky Approved when set to 3000K operation and paired with the Fixed Mount (sold separately).



# FLOOD / AREA LIGHTS

Scan to view all  
Flood/Area Lights!



## FLM02 Series

### MINI FLOOD LIGHTS

Our FLM02 Mini Flood Lights offer unmatched versatility and performance. With power and 3CCT selectability (excluding the 15W model), they provide customizable illumination for any outdoor space. Featuring a built-in Photocell, these lights ensure hassle-free, automated operation from dusk till dawn.



|                 |  |
|-----------------|--|
| <b>Wattage</b>  | 15W*, Selectable (20W/30W/50W),<br>(55W/70W/80W) |
| <b>CCT</b>      | 40K*, Selectable (30K/40K/50K)                   |
| <b>Voltage</b>  | 120-277V*, 120-347V                              |
| <b>Lumens</b>   | 1856-11270 lm                                    |
| <b>DLC</b>      | Premium  |
| <b>Finish</b>   | Bronze   |
| <b>Warranty</b> | 10 Years   |

## SP01B Series

### SPORTS STADIUM LIGHTS

High-efficiency indoor and outdoor lighting designed for recreational facilities, including stadiums, shipyards, airports, and high-mast applications. Interchangeable optics are available and sold separately. Equipped with 10kV surge protection, it ensures reliable, long-lasting performance in demanding environments.



|                 |                   |
|-----------------|-------------------|
| <b>Wattage</b>  | 500W, 750W, 1000W |
| <b>CCT</b>      | 50K               |
| <b>Voltage</b>  | 120-347V          |
| <b>Lumens</b>   | 69937-148772 lm   |
| <b>DLC</b>      | Premium           |
| <b>Finish</b>   | Black             |
| <b>Warranty</b> | 5 Years           |



\*SELECT PRODUCTS ONLY. VISIT OUR WEBSITE TO LEARN MORE  
Availability subject to change



# AREA LIGHTS

Scan for  
full series  
details!



## PTA02 Series

### POLE TOP AREA LIGHTS

Where elegance meets performance—designed for poles up to 2.75" OD. Equipped with high-efficiency Type V Optics, this series delivers wide, uniform lighting ideal for parking lots, pathways, parks, and retail settings. Complete with a photocell receptacle for quick and easy photocell installation (photocell sold separately).



|                       |                                |
|-----------------------|--------------------------------|
| <b>Wattage</b>        | 35W, 55W, 75W, 100W, 150W      |
| <b>CCT</b>            | Selectable (30K/40K/50K)       |
| <b>Voltage</b>        | 120-347V                       |
| <b>Lumens</b>         | 4340-18747 lm                  |
| <b>Certifications</b> | DLC Premium, DarkSky Approved* |
| <b>Finish</b>         | Bronze                         |
| <b>Warranty</b>       | 10 Years                       |

# BOLLARDS

Scan for  
full series  
details!



## BL01 Series

### BOLLARDS

Elevate your outdoor spaces with our sleek Bollards. Transform pathways, gardens, sidewalks, building entrances, and other landscapes that require ambient illumination. Choose from 19", 35", and 42" Base Pole heights to perfectly complement your space and create a welcoming atmosphere.



|                       |   |
|-----------------------|---|
| <b>Wattage</b>        | Selectable (14W Maximum, 25% / 50% / 75% / 100% field adjustable) |
| <b>CCT</b>            | Selectable (30K/40K/50K)  |
| <b>Voltage</b>        | 120-347V  |
| <b>Lumens</b>         | 1680 lm   |
| <b>Certifications</b> | DarkSky Approved  |
| <b>Finish</b>         | Black   |
| <b>Warranty</b>       | 10 Years  |





# WCYL | WALL CYLINDERS

With a sleek design and customizable features, this series elevates any space with dynamic lighting effects and a bright, energy-efficient performance. Combining style and functionality, this series enhances the ambiance and utility of your environment. Choose from 3CCT or RGBW\* models to suit the needs of your specific project. Select models complete with a built-in Photocell\*.



| Fixtures               | Wattage     | CCT         | Voltage  | Distribution    | Lumens      | Finish |
|------------------------|-------------|-------------|----------|-----------------|-------------|--------|
| WCYL-D-15W-3P-3CCT-UD  | 7W/10W/15W  | 30K/40K/50K | 120-347V | Direct          | 739-1497 lm | Black  |
| WCYL-DI-30W-3P-3CCT-UD | 10W/20W/30W | 30K/40K/50K | 120-347V | Direct/Indirect | 913-3203 lm | Black  |
| WCYL-DI-30W-RGBW-LV    | 30W         | RGBW        | 120-277V | Direct/Indirect | 270-1230 lm | Black  |

## VERSATILE APPLICATION

Whether enhancing outdoor landscapes or elevating indoor ambiance in lobbies, hallways, or conference rooms, our WCYL Wall Cylinders offer unmatched customization, making them an indispensable choice for lighting designers and architects alike!

## FUNCTIONALITY MEETS ELEGANCE

Say goodbye to choosing between functionality and style! This versatile series combines practical lighting with a sleek, contemporary design, making it the perfect option for those seeking to enhance their space with both efficiency and elegance.



# CYL | CYLINDERS

Experience unparalleled versatility with our fully configurable CYL Cylinders! This series is power and 4CCT selectable, featuring a 120-347V universal driver and 0-10V dimming. Engineered with precision and innovation in mind, this series allows for easy adjustments after installation is complete to meet the evolving needs of your space.



| Fixtures              | Wattage     | CCT             | Voltage  | Beam Angle      | Lumens       | Finish |
|-----------------------|-------------|-----------------|----------|-----------------|--------------|--------|
| CYL-35W-3P-4CCT-UD-BK | 21W/28W/35W | 27K/30K/35K/40K | 120-347V | 30°/40°/50°/60° | 2370-3476 lm | Black  |
| CYL-35W-3P-4CCT-UD-WH | 21W/28W/35W | 27K/30K/35K/40K | 120-347V | 30°/40°/50°/60° | 2370-3476 lm | White  |

## MOUNTING OPTIONS

Our CYL Cylinders come ready for surface mounting with optional pendant mount kits sold separately. Our pendant mount kits are offered in Black and White, and complete with a 63" coloured power cord to match.

## TOOLLESS BEAM ANGLE ADJUSTMENTS

Our innovative twist-and-lock mechanism allows for quick and easy beam angle selection, even after installation is complete. Select from 30°, 40°, 50°, or 60° to achieve the perfect lighting for any project!

# HB8 HIGH BAYS

Our HB8 High Bays offer powerful performance in a compact design, featuring durable die-cast aluminum housing, a polycarbonate lens, and top-rated NEMA 4X, NSF, IP65, and DLC Premium certifications.

This best-selling series offers power and 3CCT selectability, along with shatterproof interchangeable optics, a 65" power cord, and a motion sensor receptacle. Plus, choose from a wide range of accessories sold separately, allowing for even more flexibility!



| Fixtures               | Wattage            | CCT             | Voltage  | Lumens         | Finish |
|------------------------|--------------------|-----------------|----------|----------------|--------|
| HB8-100W-3P-3CCT-UD    | 60W / 80W / 100W   | 30K / 40K / 50K | 120-347V | 9172-14672 lm  | Black  |
| HB8-150W-3P-3CCT-UD    | 100W / 120W / 150W | 30K / 40K / 50K | 120-347V | 15036-21828 lm | Black  |
| HB8-150W-3P-3CCT-UD-WH |                    |                 |          |                | White  |
| HB8-240W-3P-3CCT-UD    | 200W / 220W / 240W | 30K / 40K / 50K | 120-347V | 27842-35550 lm | Black  |
| HB8-240W-3P-3CCT-UD-WH |                    |                 |          |                | White  |
| HB8-300W-3P-3CCT-LV    | 240W / 270W / 300W | 30K / 40K / 50K | 120-277V | 32425-46362 lm | Black  |
| HB8-300W-3P-3CCT-HV    | 240W / 270W / 300W | 30K / 40K / 50K | 277-480V | 36414-46098 lm | Black  |

A variety of accessories sold separately



Motion Sensors



60° & 120° Optics



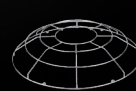
Aluminum Reflector



Frosted Lens



Polycarbonate Reflector



Wire Guard



Emergency LED Driver





## INDUSTRIAL & MANUFACTURING

Optimized for warehouses, factories, and food processing facilities, providing uniform lighting that minimizes shadows and enhances visibility over large areas. With energy-efficient LEDs and a durable design, it reduces operating costs and maintenance, boosting both safety and productivity.



## COMMERCIAL, PUBLIC & COMMUNITY BUILDINGS

Perfect for gyms, retail stores, and community halls, delivering bright, even illumination that improves visibility and creates a welcoming atmosphere. Its energy efficiency cuts utility costs, while its long lifespan ensures minimal maintenance, making it an ideal choice for high-traffic spaces.



# LHB04 | LINEAR HIGH BAYS

Elevate your lighting with this high-performance, compact Linear High Bay. Designed with high-impact, shatterproof polycarbonate optics, it exceeds DLC 5.1 glare standards and offers both narrow and wide distribution options. This series delivers exceptional light quality, brightness, and long lasting durability all at an affordable price point.



| Fixtures                 | Wattage            | CCT             | Voltage  | Lumens         | Finish |
|--------------------------|--------------------|-----------------|----------|----------------|--------|
| LHB04-110W-3P-3CCT-UD-WH | 70W / 90W / 110W   | 35K / 40K / 50K | 120-347V | 10318-16113 lm | White  |
| LHB04-150W-3P-3CCT-UD-WH | 110W / 130W / 150W | 35K / 40K / 50K | 120-347V | 15437-21483 lm | White  |
| LHB04-220W-3P-3CCT-UD-WH | 180W / 200W / 220W | 35K / 40K / 50K | 120-347V | 25609-32020 lm | White  |
| LHB04-295W-3P-3CCT-UD-WH | 255W / 275W / 295W | 35K / 40K / 50K | 120-347V | 38345-46571 lm | White  |

## OPTIONAL ACCESSORIES

In addition to power and 3CCT selectability, our wide range of accessories allows for further customization! Choose from wire guards, motion sensors, 65° and 110° interchangeable optics, pendant and surface mount kits, and more, sold separately.

## FEATURE FOCUSED

Engineered for durability and versatility, this compact Linear High Bay features die-cast aluminum housing and a polycarbonate lens for superior protection. This series is an energy efficient replacement for traditional fluorescent fixtures and HID high bays, ideal for warehouses, factories, workshops, and more!

# HIGH BAYS

# CANOPY LIGHTS

Scan to view all  
Canopy Lights  
details!



## HB7C Series



### HIGH BAYS

Our shatterproof polycarbonate optics meet DLC 5.1 glare standards. Variety of accessories available.

|                 |                               |
|-----------------|-------------------------------|
| <b>Wattage</b>  | 100W, 150W, 240W, 300W*       |
| <b>CCT</b>      | 40K, 50K                      |
| <b>Voltage</b>  | 120-277V, 120-347V, 277-480V* |
| <b>Lumens</b>   | 14483-40684 lm                |
| <b>DLC</b>      | Premium                       |
| <b>Finish</b>   | Black                         |
| <b>Warranty</b> | 5 Years                       |



Scan to view all  
High Bays

## GCL01 Series



### GARAGE CANOPY LIGHTS

Horizontal light dispersion for maximum uniform coverage. Optional motion sensor available (sold separately).

|                 |              |
|-----------------|--------------|
| <b>Wattage</b>  | 45W, 75W     |
| <b>CCT</b>      | 40K          |
| <b>Voltage</b>  | 120-347V     |
| <b>Lumens</b>   | 5958-9558 lm |
| <b>DLC</b>      | Premium      |
| <b>Beam</b>     | 170°         |
| <b>Finish</b>   | White        |
| <b>Warranty</b> | 5 Years      |

## CP03 Series



### CANOPY LIGHTS

Power and 3CCT selectable with a dropped lens for improved beam angle.

|                 |   |
|-----------------|---|
| <b>Wattage</b>  | Selectable<br>(20W/30W/40W),<br>(40W/60W/75W) |
| <b>CCT</b>      | Selectable<br>(30K/40K/50K)                   |
| <b>Voltage</b>  | 120-347V                                      |
| <b>Lumens</b>   | 2892-9414 lm                                  |
| <b>DLC</b>      | Premium                                       |
| <b>Beam</b>     | 110°  |
| <b>Finish</b>   | White   |
| <b>Warranty</b> | 5 Years                                       |

# PANELS / TROFFERS

Scan for full series details!



## VOL Series



### VOLUMETRIC TROFFERS

Ideal for commercial lighting areas such as offices, retail spaces, hallways, healthcare applications, and more. Rigid steel frame mounts to any T-Bar ceiling.



| Wattage                                    | CCT                         | Voltage  | Lumens       | Size               | Finish | Warranty |
|--|-----------------------------|----------|--------------|--------------------|--------|----------|
| Selectable (20W/30W/40W),<br>(30W/35W/40W) | Selectable<br>(30K/35K/40K) | 120-347V | 2760-5190 lm | 2' x 2'<br>2' x 4' | White  | 5 Years  |

\*SELECT PRODUCTS ONLY. VISIT OUR WEBSITE TO LEARN MORE  
Availability subject to change



# PLP / PLS | PANEL LIGHTS

High-performance, lightweight luminaires offering versatile installation options, including lay-in, surface, or suspension mounting. With power and 3CCT selectability, our panels allow for easy configuration. 0-10V dimming capability and dual leads on both sides of the driver Junction Box offer additional flexibility. Plus, waffle stamping on the back of the Panels improves heat dissipation, enhancing the lifespan of the driver and fixture itself.



| Fixtures                                     | Wattage         | CCT                                | Voltage  | Size    | Lumens                       | Finish |
|--|-----------------|------------------------------------|----------|---------|------------------------------|--------|
| PLP14-40W-3P-3CCT-UD<br>PLS14-40W-3P-3CCT-UD | 20W / 30W / 40W | 30K / 35K / 40K<br>35K / 40K / 50K | 120-347V | 1' x 4' | 2844-5203 lm<br>2646-4697 lm | White  |
| PLP22-40W-3P-3CCT-UD<br>PLS22-40W-3P-3CCT-UD | 20W / 30W / 40W | 30K / 35K / 40K<br>35K / 40K / 50K | 120-347V | 2' x 2' | 2606-5039 lm<br>2656-4678 lm | White  |
| PLP24-50W-3P-3CCT-UD<br>PLS24-50W-3P-3CCT-UD | 30W / 40W / 50W | 30K / 35K / 40K<br>35K / 40K / 50K | 120-347V | 2' x 4' | 3918-6478 lm<br>3819-5656 lm | White  |

## HEALTHCARE FACILITIES

Our PLS and PLP series Panels offer bright, glare-free illumination, reducing eye strain for medical professionals, making them ideal for hospitals, clinics, and labs where both performance and savings are important.

## SCHOOLS & OFFICES

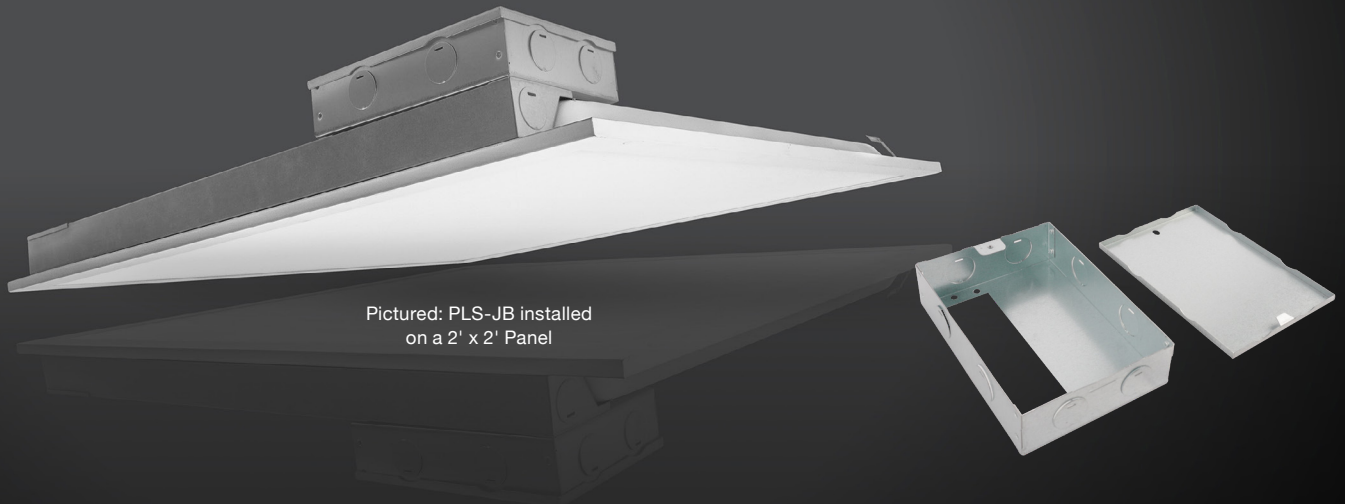
Lighting plays a key role in promoting concentration and well-being. Panels help reduce eye strain, making them perfect for classrooms, meeting rooms, and open office spaces where focus is required. Panel lights contribute to a brighter, more productive atmosphere.



# JUNCTION BOX

Our optional Junction Box (PLS-JB) provides an additional 424 cm<sup>3</sup> (25.5 in<sup>3</sup>) of volume for wiring and features 8 extra knockouts for line or low voltage connections.

Designed for quick and easy installation, only requiring 2 screws! Tested and approved by cETL, the PLS-JB is specifically certified for use with CSC LED PLS and PLP series Panels and must be used exclusively with these products to maintain listing compliance.



## RETAIL & SUPERMARKETS

Enhance retail spaces by offering bright, uniform lighting that highlights products and eliminates shadows. Each fixture is 3CCT allowing for on-site adjustments tailored to specific project conditions in order to create the most flattering light output.

## WAREHOUSES & INDUSTRIAL SPACES

Where safety and visibility are paramount, our panels provide both. Powerful, uniform lighting ensures that large areas are well-lit without creating dark spots or harsh shadows. This is crucial for workers navigating expansive floors or operating heavy machinery.

# ST | STRIP LIGHTS

Our best selling ST series Strip Lights come in 2', 4', and 8' lengths crafted from high-quality materials for effortless installation and exceptional value. Our Strips come surface mount ready, with optional suspension kits sold separately. Thanks to the use of aircraft cables, the lens cover remains attached to the fixture during wiring, eliminating the need to place the cover elsewhere, streamlining the installation process.



## Select 4' Models Complete With a Built-in Motion Sensor!

| Fixtures   | Wattage      | CCT         | Voltage  | Lumens        | Length | Finish |
|--|--------------|-------------|----------|---------------|--------|--------|
| ST2B-20W-3CCT-UD                                   | 20W          | 35K/40K/50K | 120-347V | 2805-2903 lm  | 2'     | White  |
| ST4B-40W-3P-3CCT-UD<br>ST4B-40W-3P-3CCT-UD-MS02-MW | 20W/30W/40W  | 35K/40K/50K | 120-347V | 2908-5521 lm  | 4'     | White  |
| ST4B-50W-3P-3CCT-UD<br>ST4B-50W-3P-3CCT-UD-MS02-MW | 30W/40W/50W  | 35K/40K/50K | 120-277V | 4740-7850 lm  | 4'     | White  |
| ST8B-70W-3P-3CCT-UD                                | 50W/60W/70W  | 35K/40K/50K | 120-347V | 7866-10992 lm | 8'     | White  |
| ST8B-100W-3P-3CCT-UD                               | 60W/80W/100W | 35K/40K/50K | 120-347V | 9480-15700 lm | 8'     | White  |





## STREAMLINE YOUR SPACE

Our ST series Strips are the perfect choice to enhance the visibility and functionality of cove areas, general lighting applications, shops, parking garages, and more! Plus, for increased time savings, select 4' models (ending in -MS02-MW) come complete with a preinstalled microwave motion sensor.



## PLUG & PLAY ROW MOUNTING

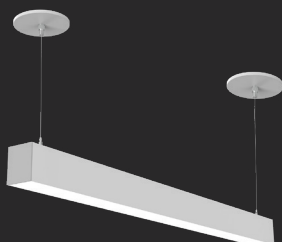
Enjoy effortless and hassle-free row mounting. With simple plug-and-play functionality, our quick-connect accessories make installation a breeze, saving both time and effort. Sold separately, our row mount kit offers a convenient and efficient way to set up your lighting system with minimal complexity.

# LINEARS

Scan to view all Linears!



## AL Series



### ARCHITECTURAL LINEAR STRIPS

Elevate your space by creating your own custom lighting design. Available in direct and direct/indirect models.

**Wattage** 20W, 40W, 80W

**CCT** Selectable (30K/35K/40K)

**Voltage** 120-347V

**Lumens** 2100-9263 lm

**Length** 2', 4', 8'

**Finish** White, Black

**Warranty** 5 Years

## WR1 Series



### WRAP FIXTURE

Ideal for commercial and industrial applications. Surface or pendant mount ready.

**Wattage** 35W

**CCT** 40K

**Voltage** 120-277V

**Lumens** 4300 lm

**DLC** Standard

**Finish** White

**Warranty** 5 Years

## WR2 Series



### WRAP FIXTURE

CSC LED's most versatile wrap fixture that meets or exceeds all commercial specifications.

**Wattage** Selectable (24W/27W/30W/35W)

**CCT** Selectable (35K/40K/50K)

**Voltage** 120-347V

**Lumens** 5100 lm

**DLC** Standard

**Finish** White

**Warranty** 5 Years

**AL Backlit Connectors**  
Available in Black and White



# VAPOUR PROOFS

Scan for full series details!



## VT Series



### NEMA 4X VAPOUR TIGHTS

IP66 or IP67, NEMA 4X, and IK10 rated. Power selectable and 3CCT selectable options available. Ideal for parking garages, car washes, industrial applications, food processing plants, paint shops, and other harsh environments.



| Wattage  | CCT                      | Voltage  | Lumens        | Length     | Finish     | Warranty |
|--|--------------------------|----------|---------------|------------|------------|----------|
| 150W, Selectable (15W/20W/25W), (20W/28W/35W), (30W/45W/60W), (70W/80W/90W/105W), (65W/75W/90W/110W), (150W/175W/200W) | Selectable (35K/40K/50K) | 120-347V | 2283-30950 lm | 2', 4', 8' | White/Grey | 5 Years  |



# KEYSTONE

Where sleek design meets superior performance. Our modern, energy-efficient Keystone Wall Packs offer power and 3CCT selectability, a built-in photocell, and motion sensor compatibility for total control and flexibility.



| Fixtures   | Wattage       | CCT         | Voltage  | Beam Type | Lumens         | Finish                   |
|--|---------------|-------------|----------|-----------|----------------|--------------------------|
| KWP-40W-3P-3CCT-UD-BZ<br>KWP-40W-3P-3CCT-UD-WH<br>KWP-40W-3P-3CCT-UD-BK    | 20W/30W/40W   | 30K/40K/50K | 120-347V | Type II   | 3649-6599 lm   | Bronze<br>White<br>Black |
| KWP-80W-3P-3CCT-UD-BZ<br>KWP-80W-3P-3CCT-UD-WH<br>KWP-80W-3P-3CCT-UD-BK    | 40W/60W/80W   | 30K/40K/50K | 120-347V | Type II   | 7649-14211 lm  | Bronze<br>White<br>Black |
| KWP-120W-3P-3CCT-UD-BZ<br>KWP-120W-3P-3CCT-UD-WH<br>KWP-120W-3P-3CCT-UD-BK | 80W/100W/120W | 30K/40K/50K | 120-347V | Type II   | 14671-20913 lm | Bronze<br>White<br>Black |

## FUNCTION MEETS DESIGN

Designed to complement any outdoor environment with their sleek and modern aesthetic, all models are available in Black, White, and Bronze finishes. Our Keystone Wall Packs blend in seamlessly with a variety of building styles while providing bright, energy-efficient illumination.

## RETROFITTING MADE EASY

Enjoy hassle-free, seamless retrofitting with our KWP Wall Packs. Its slightly larger footprint easily covers most classic wall pack installations, making the KWP an effortless choice for upgrading your outdoor lighting. No additional painting or adjustments are required!

# WALL PACKS

## CWPS Series

### SLIM CLASSIC WALL PACKS

This budget friendly, slim fixture is the perfect choice for a wide range of outdoor lighting applications. Its large footprint easily replaces old legacy wall packs. It's durable, easy to install, and designed with a modern twist, offering reliable illumination without compromising on style or functionality.



|                 |  |
|-----------------|--|
| <b>Wattage</b>  | Selectable (20W/30W/40W), (40W/60W/80W), (80W/100W/120W) |
| <b>CCT</b>      | Selectable (30K/40K/50K)                                 |
| <b>Voltage</b>  | 120-347V   |
| <b>Lumens</b>   | 2986-16420 lm  |
| <b>DLC</b>      | Premium  |
| <b>Finish</b>   | Bronze   |
| <b>Warranty</b> | 10 Years   |

## MWP04 Series

### MINI WALL PACKS

Perfect for landscaping, patio, security lighting, and building facades, a perfect replacement for quartz halogen fixtures. Featuring a built-in Photocell for dusk-to-dawn operation, with a durable polycarbonate lens, aluminum housing, and cooling fins for long-lasting performance.



|                 |                          |
|-----------------|--------------------------|
| <b>Wattage</b>  | Selectable (10W/15W/20W) |
| <b>CCT</b>      | Selectable (30K/40K/50K) |
| <b>Voltage</b>  | 120-347V                 |
| <b>Lumens</b>   | 1322-2749 lm             |
| <b>DLC</b>      | Premium                  |
| <b>Finish</b>   | Bronze, Black            |
| <b>Warranty</b> | 10 Years                 |





Scan to view all Wall Packs!



## CWP05 Series

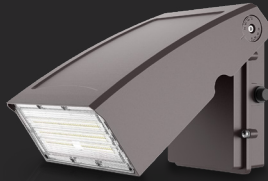


### WALL PACKS

Now with power selectability! Ideal for any outdoor general purpose lighting.

|                 |   |
|-----------------|---|
| <b>Wattage</b>  | Selectable (20W/30W/40W), (30W/40W/60W), (45W/60W/80W), (80W/100W/120W) |
| <b>CCT</b>      | Selectable (30K/40K/50K)  |
| <b>Voltage</b>  | 120-347V  |
| <b>Lumens</b>   | 3054-17966 lm   |
| <b>DLC</b>      | Premium   |
| <b>Finish</b>   | Bronze  |
| <b>Warranty</b> | 10 Years  |

## AWP04 Series



### ARCHITECTURAL WALL PACKS

Ideal for building entrances, multi-use facilities, apartments, schools, and more.

|                 |   |
|-----------------|---|
| <b>Wattage</b>  | Selectable (10W/20W/30W/40W), (50W/60W/70W/80W), (60W/80W/100W/120W)* |
| <b>CCT</b>      | 40K*, Selectable (30K/40K/50K)  |
| <b>Voltage</b>  | 120-347V  |
| <b>Lumens</b>   | 1712-15960 lm   |
| <b>DLC</b>      | Premium   |
| <b>Finish</b>   | Bronze  |
| <b>Warranty</b> | 10 Years  |

## WPX Series



### WALL PACKS

Ideal for commercial, industrial, or hospitality buildings.

|                 |                          |
|-----------------|--------------------------|
| <b>Wattage</b>  | 30W, 50W, 80W*, 120W     |
| <b>CCT</b>      | Selectable (30K/40K/50K) |
| <b>Voltage</b>  | 120-347V                 |
| <b>Lumens</b>   | 3764-14499 lm            |
| <b>DLC</b>      | Premium                  |
| <b>Finish</b>   | Black, White             |
| <b>Warranty</b> | 10 Years                 |

## CWP04 Series

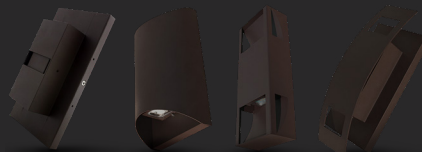


### WALL PACKS

Ideal for entryways and security lighting, with easy installation and maintenance.

|                 |                          |
|-----------------|--------------------------|
| <b>Wattage</b>  | 40W, 80W                 |
| <b>CCT</b>      | Selectable (30K/40K/50K) |
| <b>Voltage</b>  | 120-347V                 |
| <b>Lumens</b>   | 5623-11071 lm            |
| <b>DLC</b>      | Premium                  |
| <b>Finish</b>   | Bronze                   |
| <b>Warranty</b> | 10 Years                 |

## DWS Series



### DECORATIVE WALL SCONCES

3 covers available, suitable for indoor or outdoor applications.

|                 |               |
|-----------------|---------------|
| <b>Wattage</b>  | 15W           |
| <b>CCT</b>      | 30K, 40K      |
| <b>Voltage</b>  | 120-277V      |
| <b>Lumens</b>   | 1300 lm       |
| <b>Finish</b>   | Bronze, Black |
| <b>Warranty</b> | 10 Years      |

See what our customers are saying about us!

"Whenever I have any question or issue it is responded to and resolved promptly."

- December 2024 Review



"Excellent ordering system. Pleasure to use!"

- December 2024 Review



"No returns, no complaints!"

- November 2024 Review

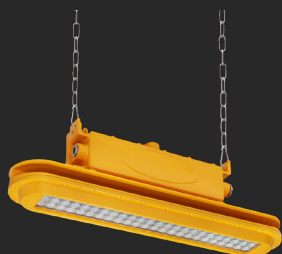


# Hazloc / Explosion-Proofs

Scan for  
full series  
details!



## EXPL Series



### LINEAR EXPLOSION-PROOF

C1, D2, (Groups A, B, C, D),  
UL844, UL1598, UL8750.  
Yoke Mount sold separately.

**Wattage** 40W, 80W

**CCT** 50K

**Voltage** 120-277V

**Lumens** 5881-11202 lm

**Length** 2', 4'

**Finish** Orange

**Warranty** 10 Years

## EXPR Series



### ROUND EXPLOSION-PROOF

C1, D2, (Groups A, B, C, D),  
UL844, UL1598, UL8750.  
Complete with Yoke Mount.

**Wattage** 60W, 100W, 150W

**CCT** 50K

**Voltage** 120-277V

**Lumens** 8870-23834 lm

**Finish** Orange

**Warranty** 10 Years

# Security Lights

Scan for  
full series  
details!



## SS Series



### SECURITY LIGHTS

Swivel arms allow for directional  
light. Includes 180° motion detection  
and 3 operating modes.

**Wattage** 20W

**CCT** 50K

**Voltage** 120-277V

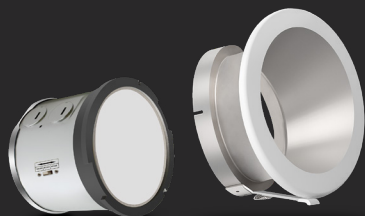
**Lumens** 1815 lm

**Finish** Black, White

**Warranty** 10 Years

# Downlights

## CDL02 Series



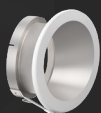
Scan for full  
series details!



### COMMERCIAL DOWNLIGHTS

Energy Star rated with 0-10V dimming  
and a built-in junction box. All models  
feature a 120-347V universal driver with  
4kV surge protection. Reflectors required  
for installation and are sold separately.

**Achieve your custom  
look by choosing from  
our 4 reflector options**



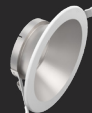
CDL02-4-R



CDL02-4-R-WW



CDL02-4-S



CDL02-6-R

| Wattage                              | CCT  | Voltage  | Lumens           | Finish | Warranty |
|--------------------------------------|--|----------|------------------|--------|----------|
| 20W,<br>Selectable<br>(27W/34W/40W)* | Selectable<br>(30K/40K/50K),<br>(30K/35K/40K)* | 120-347V | 1400-<br>3000 lm | Silver | 5 Years  |

# Work Lights

Scan for  
full series  
details!



## TWL Series



### TEMPORARY WORK LIGHT

Ideal for subway construction, factory/  
residential renovations, docks, and more.

**Wattage** 100W

**CCT** 50K

**Voltage** 120V

**Lumens** 12500 lm

**Beam** 266°

**Finish** Orange

**Warranty** 10 Years





# DarkSky Approved

All products must be set to 3000K operation or lower to maintain DarkSky compliance

Scan for full  
list of DarkSky  
approved products



We are proud to offer a range of DarkSky approved lighting solutions!  
Light pollution impacts our environment and it is important to adopt responsible  
lighting practices. Make an impact and choose DarkSky approved outdoor lighting!



## BL01 SERIES BOLLARDS

Suitable for pathways, gardens, sidewalks, building entrances, and other landscapes that require low to the ground illumination.



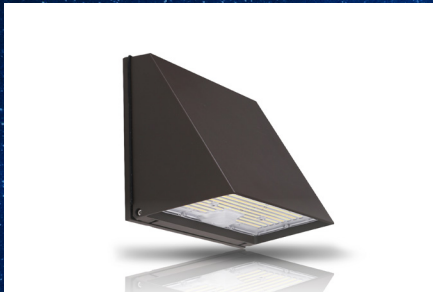
## FL04B CONCORDE SERIES

A versatile and modern appearance that brings a pleasing aesthetic to any project! DarkSky approved when used with the Fixed Mount (sold separately).



## FL05 AREA LIGHTS

Feature packed, sleek, and attractive Area Lights perfect for any application. DarkSky approved when used with the Fixed Mount (sold separately).



## KWP KEYSTONE WALL PACKS

Suitable for use in commercial and industrial building projects needing a sleek, customizable luminaire that enhances building aesthetics.



## PTA02 POLE TOP AREA LIGHTS

Elegant look and design ideal for parking lots, pathways, parks, retail settings, and more. Select models DarkSky approved.



## WPX WALL PACKS

Ideal for outdoor wall-mount applications such as commercial, industrial, retail, or hospitality buildings. Black and White options available.

## Let's Beat Light Pollution Together!



@cscledcorp



@CSC LED



**FOLLOW US ON  
SOCIAL MEDIA!**



@CSC LED



@CSC LED





See what our customers are saying about us!

"Website is easy to navigate and even easier to order."

- January 2025 Review



"Great dollar for product value/worth."

- January 2025 Review



"Every member of the team I've had the pleasure of working with over the past few years has been SUPERB!"

- December 2024 Review



"Great rep agency, excellent local stock and better customer service A++!"

- December 2024 Review



## CLEARANCE

Visit our Website to browse all Clearance Products.

All fixtures are brand new in the box complete with a 1-year warranty.

In stock and ready to ship!

## CLEARANCE

### FLM Series



#### FLOOD/AREA LIGHTS

Ideal for landscaping, patios, security lighting, signs, and more. Features a built-in photocell.

**Wattage** 15W\*, Selectable (21W/24W/27W/30W)\*

**CCT** 40K\*, Selectable (30K/40K/50K)

**Voltage** 120-277V

**Lumens** 1603-4141 lm

**DLC** Premium\*

**Finish** Bronze

**Warranty** 1 Year

### CWP03 Series



#### WALL PACKS

Ideal for exterior and entryway lighting. Features a durable die-cast aluminum body with a bronze finish.

**Wattage** 40W, 60W, 80W, 120W

**CCT** 40K, 50K

**Voltage** 120-277V, 277-480V

**Lumens** 5587-17113 lm

**Finish** Bronze

**Warranty** 1 Year

Scan for full list of clearance items!



### FL04B Series



#### CONCORDE SERIES

Quick-release, hinged access cover for control compartment. Pre-wired for optional motion sensor (sold separately).

**Wattage** 100W, 150W, 200W, 300W\*

**CCT** 30K

**Voltage** 120-347V

**Lumens** 13584-38796 lm

**DLC** Premium

**Finish** Bronze

**Warranty** 1 Year

### T-Grid Series



#### T-GRID INTEGRATED LUMINAIRE

Seamless integration into suspended ceilings allows you to create unique lighting designs.

**Wattage** 10W, 20W

**CCT** 35K, 40K

**Voltage** 120-277V

**Lumens** 1300-2600 lm

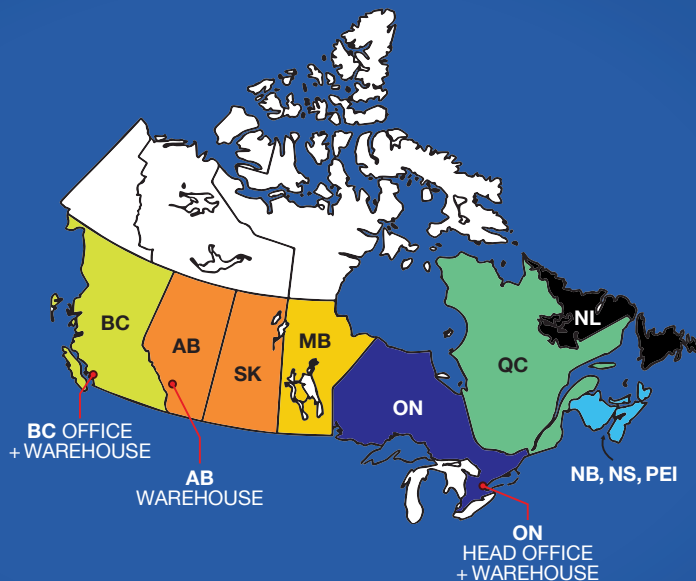
**Length** 2', 4'

**Finish** Silver

**Warranty** 1 Year



# Sales Agencies Representing CSC LED Across Canada



## KWA SALES (BC)

[www.kenwattassoc.com](http://www.kenwattassoc.com)  
[info@Kenwattassoc.com](mailto:info@Kenwattassoc.com)



## SENSIBLE ADAPTIVE SOLUTIONS (AB/SK)

[www.sensibleadaptive.com](http://www.sensibleadaptive.com)  
[krista.sherven@sensibleadaptive.com](mailto:krista.sherven@sensibleadaptive.com)



## TMC SALES (MB)

[www.tmcsales.ca](http://www.tmcsales.ca)  
[orders@tmcsales.ca](mailto:orders@tmcsales.ca)



## RONEY MARKETING (ON)

[www.roneymk.com](http://www.roneymk.com)  
[sales@roneymk.com](mailto:sales@roneymk.com)



## RICARD AGENCY

[www.agencericard.com](http://www.agencericard.com)  
[info@agencericard.com](mailto:info@agencericard.com)



## CATALYST SALES (NB, NS, PEI)

[www.catalystsales.ca](http://www.catalystsales.ca)  
[info@catalystsales.ca](mailto:info@catalystsales.ca)



## RWM ENTERPRISES (NL)

[bmyersptech@bellaliant.com](mailto:bmyersptech@bellaliant.com)

## DISTRIBUTORS

Contact your regional sales agency to learn more about our products and services.

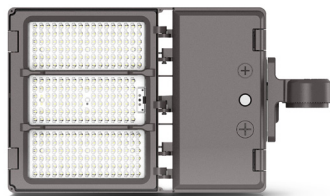
## ELECTRICIANS

Contact your regional sales agency to find your nearest electrical wholesaler.

## Share Your Experience!

We value your opinion! Have you recently experienced our products or services? We'd love to hear about it. Your feedback helps us improve and ensures we continue to meet your needs.

Scan to  
write your  
own review!



**FL05-150W-3P-3CCT-UD-BZ**



"So many options from wattage selectable, mounting brackets, photocell, colour selectable, and different housing colour options. One of our top sellers!"

- Verified Purchaser



**KWP-40W-3P-3CCT-UD-BK**



"This unit is great, we have these on our building and the area is well-lit up where needed. Great fixtures and design!"

- Verified Purchaser



**WCYL-DI-30W-RGBW-LV**



"Amazing product easy to use and install. Standard white light looks good and dims well, there are plenty of colour changing options and preset modes."

- Verified Purchaser

## **CANADIAN OWNED AND OPERATED**

Canada may represent only about 3% of the global LED market, but it accounts for 100% of CSC LED's focus, dedication, and business commitment. For over 20 years, CSC LED has been committed to the Canadian marketplace, fostering strong relationships in the electrical industry.



### **BC WAREHOUSE**

1140-2375 Fremont St  
Port Coquitlam, BC V3B 0N9  
(778) 730-0448

### **AB WAREHOUSE**

13-2355 52 Ave SE  
Calgary, AB T2C 4X7  
(403) 907-0212

### **ON HEAD OFFICE**

8-540 Jamieson Pkwy  
Cambridge, ON N3C 0G5  
(519) 880-9833