

## IMPORTANT SAFETY INSTRUCTIONS.

1. Read all instructions completely before beginning. Keep these instructions in a safe place for future reference.
2. To reduce risk of fire and over-heating, make sure all connections are tight.
3. Turn off the electrical power before proceeding.



### CAUTION: Risk of fire or electric shock

LED Retrofit Kit installation requires knowledge of luminaires electrical systems. If not qualified, do not attempt installation. Contact a qualified professional.

**WARNING** - Risk of fire or electric shock. LED Retrofit Kit installation requires knowledge of luminaires electrical systems. If not qualified, do not attempt installation. Contact a qualified electrician.

**WARNING** – Risk of fire or electric shock. Install these kits only in the luminaires that have the construction features and dimensions shown in the photographs and/or drawings, and where the input rating of the retrofit kit does not exceed the input rating of the luminaire.

**WARNING** – To prevent wiring damage or abrasion, do not expose wiring to edges of sheet metal or other sharp objects.

Do not make or alter any open holes in the enclosure of wiring or electrical components during installation.

THIS RETROFIT KIT IS ACCEPTED AS A COMPONENT OF A LUMINAIRE WHERE THE SUITABILITY OF THE COMBINATION SHALL BE DETERMINED BY AUTHORITIES HAVING JURISDICTION.

Please examine all parts that are not intended to be replaced by the retrofit kit for damage and replace any damaged parts prior to installation of the retrofit kit.

### A TYPE Retrofit Kit Contents:

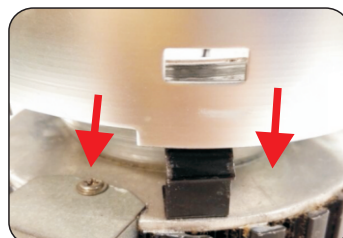
- 1.Engine
- 2.LED Driver Box
- 3.User manual
- 4.CLIPS 4PCS
- 5.Label

### B TYPE Retrofit Kit Contents:

- 1.Engine (without housing)
- 2.LED Driver Box
- 3.User manual
- 4.CLIPS 4PCS
- 5.Housing
- 6.Label

## If B type retrofit kit should need increase installation

Gap of housing snap to the boundary of the metal plate. Housing envelop three spring sheet. Press the housing down to the three spring sheet pop-up.



## Housing Compatibility:

4 fits 4" min. to 4.7" max. mounting frame diameters. (For models C4-D27W-XXX)

6 fits 6" min. to 6.7" max. mounting frame diameters. (For models CE6-18W-XXX, CE6-27W-XXX, CE6-40W-XXX, CE6-18W-XXX-347, CE6-27W-XXX-347, CE6-40W-XXX-347)

8 fits 7.7" min. to 8.4" max. mounting frame diameters. (For models CE8-18W-XXX, CE8-27W-XXX, CE8-40W-XXX, C8-D54W-XXX, CE8-18W-XXX-347, CE8-27W-XXX-347, CE8-40W-XXX-347, CE8-50W-XXX-347)

10 fits 10" min. to 10.7" max. mounting frame diameters. (For models CE10-27W-XXX, CE10-40W-XXX, C10-D54W-XXX, CE10-27W-XXX-347, CE10-40W-XXX-347, CE10-50W-XXX-347)

## Retrofit to LED step

**NOTE: RETROFIT KIT IS VOLTAGE SPECIFIC. VERIFY PROPER VOLTAGE BEFORE INSTALLATION.**

**Step 1:** Remove existing lamp(s).

**Step 2:** Remove and discard existing reflector.

**Step 3:** Open board side of J-box.

**Step 4:** See 4A and 4B. Locate J-box containing supply wires and cut all supply wires leading to the ballast and output lead of ballast. (May remove wires of ballast)

**Step 5:** Twist out conduit knockout.

**Step 6:** Place LED Driver box through ceiling cut-out and allow to rest on ceiling.

**Step 7:** Install the supply conduit of Driver Box into the junction box.

**Step 8:** Connect the supply to the driver. Connect GND to green wire.

**Step 9:** Close board side of J-box. Then secure driver to the ceiling with screws.

**Step 10 :** See figure 9, get the safety hook to the bracket hole.

**Step 11:** Plug the yellow connector of new LED engine to the yellow connector on the end of the flex conduit provided on the driver box.

**Step 12:** Plug the connector of metal to hole of LED engine.

**Step 13:** Ensure the mounting frame can hold the weight of the whole reflector.

**Step 14:** Restore power after installation of fixture is completed.

**Step 15:** After modification completed, attach the Lamping Replacement Marking Label and Cautionary Label which provided with the retrofit kit package to the light fixture. The labels shall be visible during relamping, and after installation.

