

Pole Top Area Light

55W | Tunable | 120-277V



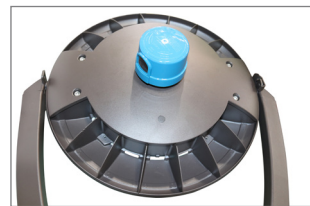
Elegant look and design. Tunable 3000K, 4000K, 5000K
Ideal for parking lots, pathways, parks, retail settings, and more

Twist lock photocell receptacle
and photocell included
Shorting cap ordered separately*

Polyester powder-coat finish
(Bronze)

Instant start

High efficiency optics
with Type V distribution



CCT selector switch

Fits up to 3" OD pole



Shorting Cap (JL-208) sold separately



TECHNICAL DATA



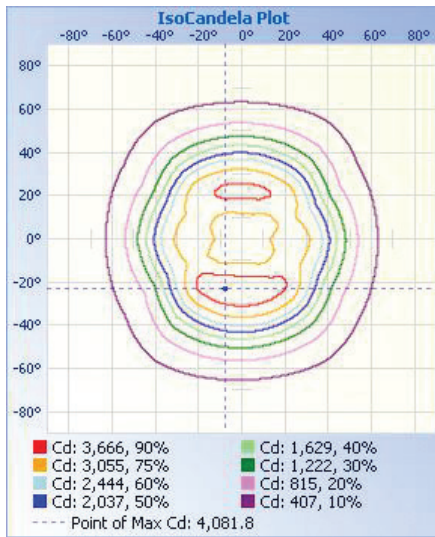
LIGHT SPECIFICATIONS

Lumens	6,214 lm
Efficacy	113.5 lm/W
CCT	3000K, 4000K, 5000K
CRI	80
Distribution	90°
L70 Life	50,000 hours
Warranty	5-year

APPROVALS AND LISTINGS

cUL	E482965
DLC Premium	PLT6TANUW6Y6

ISOCANDELA PLOT



ILLUMINANCE AT A DISTANCE

Distance	Center Beam fc	Beam Width
17.0ft	10.4 fc	29.6 ft
34.0ft	2.59 fc	59.1 ft
51.0ft	1.15 fc	88.7 ft
68.0ft	0.65 fc	118.3 ft
85.0ft	0.41 fc	147.8 ft
102.0ft	0.29 fc	177.4 ft

■ Vert. Spread: 82.0°
■ Horiz. Spread: 67.0°

ELECTRICAL

Wattage	55W
Voltage	120-277V
Power Factor	0.9
THD	15%
Operating temp	-40 to 60°C

CONSTRUCTION

Housing	Aluminum alloy
Finish	Polyester powder-coat
Colour	Bronze
IP rating	IP65
Weight	14.33 lbs
Carton qty	1

ACCESSORIES (Ordered Separately)

JL-208	Shorting Cap
--------	--------------

DIMENSIONS

