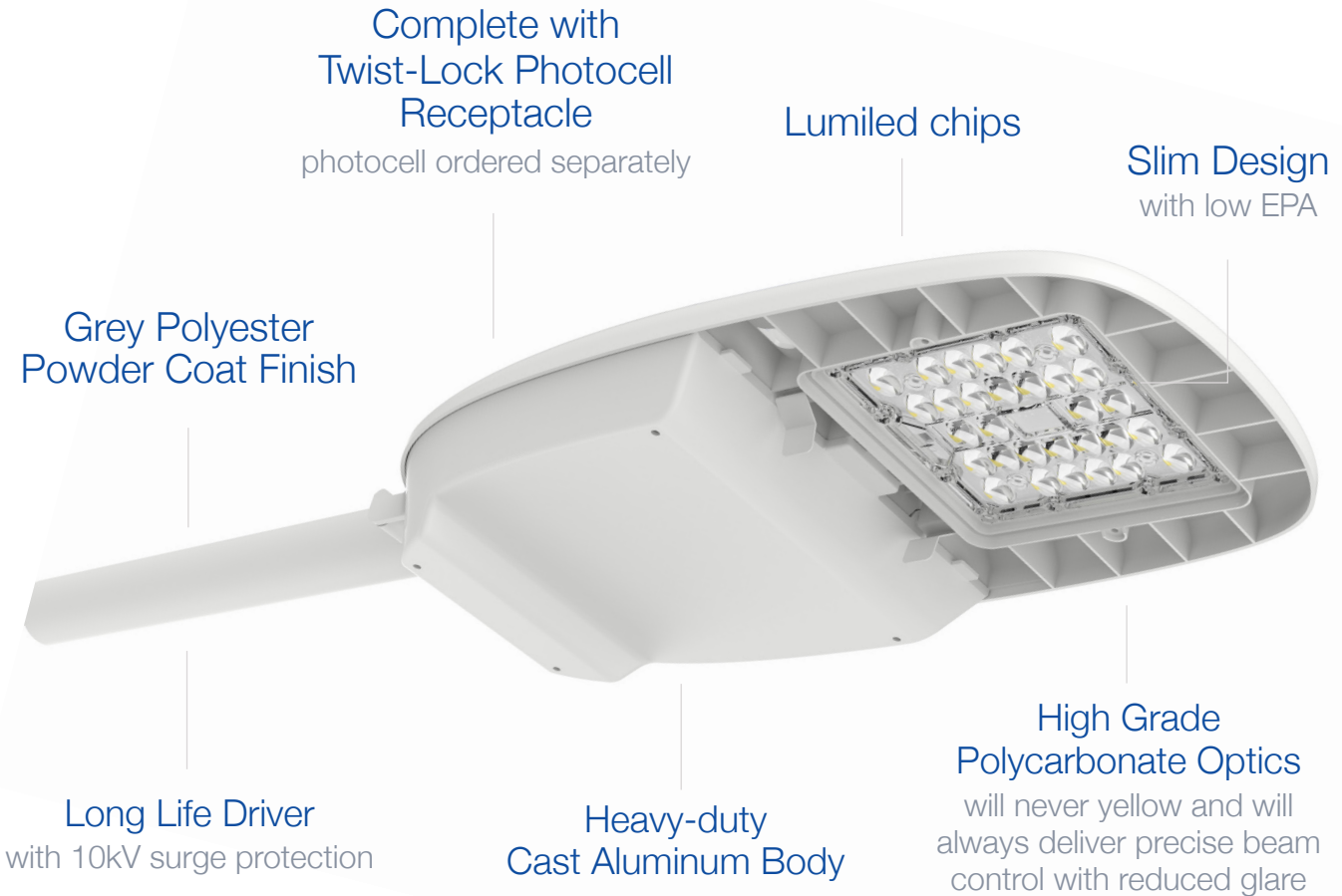


ST02B Street Light

100W | 4000K | 120-277V



Ideal for outdoor applications such as municipal street lighting, parking lots, construction sites, storage and rail yards, industrial locations, marinas, and more



Required Accessories (Sold Separately):
A Photocell (JL-205LV) or a Shorting Cap (JL-208) **must** be added.



JL-205LV



JL-208



TECHNICAL DATA

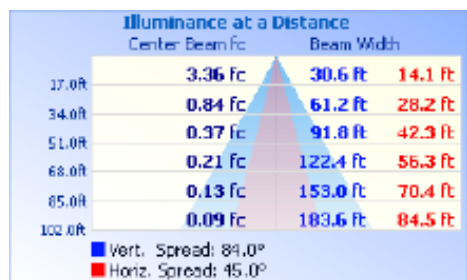
LIGHT SPECIFICATIONS

Lumens	12,552 lm
Efficacy	125.14 lm/W
CCT	4000K
CRI	>70
L70 Life	>60,000 hrs
Dimmable	0-10V
Warranty	10-year

APPROVALS AND LISTINGS

cUL	E482965
DLC Premium	PQT0BIUP

ILLUMINANCE AT A DISTANCE



ELECTRICAL

Wattage	100W
Voltage	120-277V
Power Factor	>0.9
THD	15%
Operating temp	-40 to 40°C

CONSTRUCTION

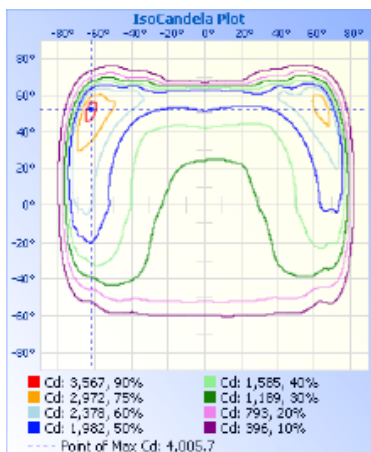
Housing	Aluminum
Finish	Grey
IP Rating	IP65
Gross Weight	4.5 kg
Carton Qty	1
Carton Dimensions	507 x 248.5 x 157 mm

ACCESSORIES (Ordered Separately)

Photocell	JL-205LV
Shorting Cap	JL-208

IMPORTANT: Includes Twist Lock Receptacle. A Photocell or a Shorting Cap must be added and is ordered separately.

ISOCANDELA PLOT



DIMENSIONS

